

Full-Time Faculty and Administrative Staff

Academic Year 2024-2025

**Office of the University Provost
November 1, 2024**



TABLE OF CONTENTS

I. Summary of Full-Time Faculty by College, School/Department, Tenure Status, and Rank, AY 2024 - 2025	1
II. Office of the University Provost	2
III. College of Basic and Applied Sciences	6
Aerospace	9
Agriculture	10
Biology	11
Chemistry	13
Computer Science	15
Concrete and Construction Management	16
Data Science Program	17
Engineering Technology	18
Geosciences	19
Mathematical Sciences	20
Military Science	22
Physics and Astronomy	23
IV. College of Behavioral and Health Sciences	24
Criminal Justice Administration	26
Health and Human Performance	27
Human Sciences	29
Nursing	30
Physician Assistant Studies	32
Psychology	33
Social Work	35
V. Jennings A. Jones College of Business	36
Accounting	38
Economics and Finance	39
Information Systems and Analytics	41
Management	42
Marketing	44
VI. College of Education	46
Elementary and Special Education	48
Womack Educational Leadership	49
VII. College of Liberal Arts	50
Art and Design	53
Communication Studies	55
English	57
History	60
Music	62

Philosophy and Religious Studies	64
Political and Global Affairs	65
Sociology and Anthropology	66
Theatre and Dance	67
World Languages, Literatures, and Cultures	68
VIII. College of Media and Entertainment	70
Journalism and Strategic Media	72
Media Arts	73
Recording Industry	75
IX. University College and Office of Student Success	78
University Studies	82
X. University Honors College	82
University Honors	86
XI. James E. Walker Library	86
Collection Development and Management	88
User Services	89
XII. College of Graduate Studies and Office of Research and Sponsored Programs	90
XIII. Enrollment Services	92
XIV. Office of International Affairs	94
XV. True Blue Core	96

Explanation of Abbreviations used in the Administrative Staff and Faculty List Book

T9 = Tenured Appointment
K9 = Tenure Track Appointment
N9 = Full-Time Temporary Appointment
NI = Instructor Track Appointment
NK = Coordinator Track Appointment
NN = Clinical Track Appointment/Professional Practice Appointment
NR = Research Track Appointment

1 = Professor
2 = Associate Professor
3 = Assistant Professor
4 = Instructor
5 = Lecturer
6 = Senior Instructor
7 = Master Instructor

Double-lined positions on Organization Charts denote Administrative or Faculty Supervisors
Single-lined positions on Organization Charts denote Administrative employees
Dashed-line positions on Organization Charts denote vacancies

Summary of Full-Time Faculty by College, School/Department, Tenure Status, and Rank, AY 2024 - 2025

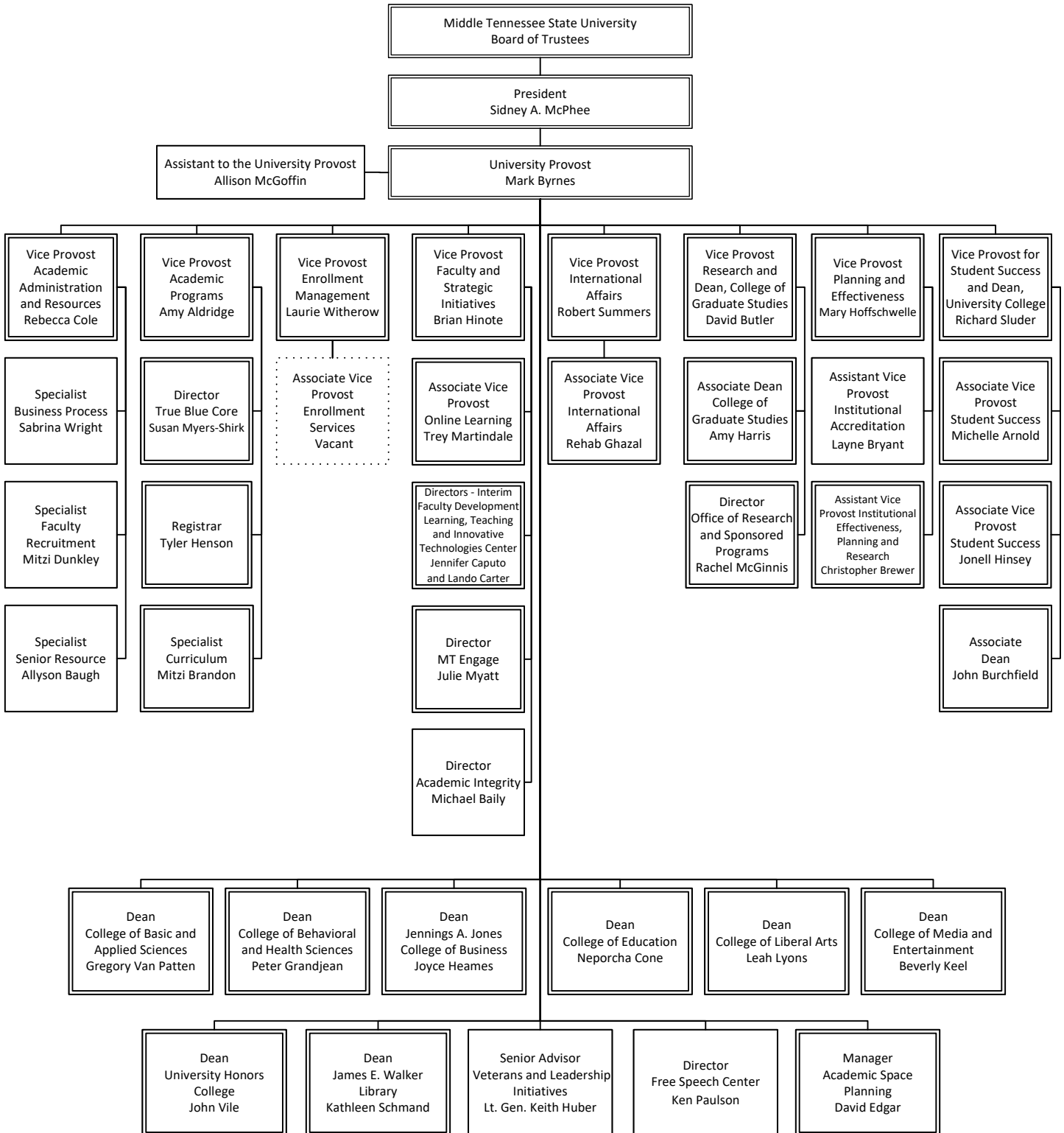
College	Tenure Status *								Rank Code **							
	T	TT	Temp	Inst	Coor	Clin/PP	Res	Total	Prof	Assoc	Asst	MInst	SInst	Inst	Lec	Total
Basic and Applied Sciences																
Aerospace	12	5	1	0	1	2	0	21	4	9	6	0	0	1	1	21
Agriculture	9	1	0	0	3	2	1	16	6	4	2	0	1	3	0	16
Biology	25	5	3	2	1	1	0	37	20	5	5	0	0	4	3	37
Chemistry	24	2	2	1	3	0	1	33	19	5	3	0	1	3	2	33
Computer Science	7	7	1	0	0	0	0	15	5	2	7	0	0	0	1	15
Concrete and Construction Management	4	2	1	0	0	4	0	11	3	4	2	0	0	1	1	11
Data Science Program	0	0	1	0	0	0	0	1	0	0	0	0	0	0	1	1
Engineering Technology	7	2	4	1	0	0	0	14	3	4	2	0	0	1	4	14
Geosciences	7	3	1	1	0	0	0	12	4	3	3	0	0	1	1	12
Mathematical Sciences	20	6	11	0	0	0	0	37	15	5	6	0	0	0	11	37
Physics and Astronomy	7	1	3	2	0	1	1	15	4	3	3	1	0	1	3	15
Total	122	34	28	7	8	10	3	212	83	44	39	1	2	15	28	212
Behavioral and Health Sciences																
Criminal Justice Administration	7	1	2	1	0	1	0	12	6	2	1	0	0	1	2	12
Health and Human Performance	17	9	9	2	4	0	0	41	9	10	7	3	1	2	9	41
Human Sciences	11	2	4	3	0	0	0	20	8	3	2	1	1	1	4	20
Nursing	7	4	1	0	0	15	0	27	6	2	18	0	0	0	1	27
Physician Assistant Studies	0	0	0	0	0	1	0	1	0	0	1	0	0	0	0	1
Psychology	20	9	6	2	0	0	0	37	15	5	9	0	0	2	6	37
Social Work	4	2	4	0	1	0	0	11	3	1	2	0	0	1	4	11
Total	66	27	26	8	5	17	0	149	47	23	40	4	2	7	26	149
Business																
Accounting	14	2	3	0	1	1	0	21	7	8	2	1	0	0	3	21
Economics and Finance	20	4	2	0	0	0	0	26	13	7	4	0	0	0	2	26
Information Systems and Analytics	12	4	3	1	0	0	0	20	7	5	4	0	0	1	3	20
Management	19	5	4	1	2	0	0	31	12	7	5	1	0	2	4	31
Marketing	13	2	1	0	1	1	0	18	7	7	2	0	0	1	1	18
Total	78	17	13	2	4	2	0	116	46	34	17	2	0	4	13	116
Education																
Elementary and Special Education	12	5	1	0	0	0	0	18	8	4	5	0	0	0	1	18
Womack Educational Leadership	13	5	3	0	0	0	0	21	7	8	3	0	0	0	3	21
Total	25	10	4	0	0	0	0	39	15	12	8	0	0	0	4	39
Liberal Arts																
Art and Design	14	5	5	4	0	0	0	28	5	10	4	0	1	3	5	28
Communication Studies	9	0	11	5	0	0	0	25	4	5	0	2	0	3	11	25
English	25	4	30	15	0	0	0	74	20	5	4	4	1	10	30	74
History	20	2	11	5	1	0	2	41	16	6	2	3	0	3	11	41
Music	27	3	3	2	1	0	0	36	23	4	3	1	1	1	3	36
Philosophy and Religious Studies	7	2	0	0	0	0	0	9	5	2	2	0	0	0	0	9
Political Science and Global Affairs	17	0	2	0	0	1	0	20	11	7	0	0	0	0	2	20
Sociology and Anthropology	14	1	3	0	0	0	0	18	9	5	1	0	0	0	3	18
Theatre and Dance	6	4	3	1	4	0	0	18	4	2	4	0	0	5	3	18
World Languages, Literatures, and Cultures	14	2	2	2	0	0	0	20	8	6	2	1	0	1	2	20
Total	153	23	70	34	6	1	2	289	105	52	22	11	3	26	70	289
Media and Entertainment																
Journalism and Strategic Media	14	3	3	1	0	0	0	21	8	6	3	0	0	1	3	21
Media Arts	13	6	7	2	0	0	0	28	2	13	4	0	0	2	7	28
Recording Industry	19	8	3	0	0	0	0	30	12	7	8	0	0	0	3	30
Total	46	17	13	3	0	0	0	79	22	26	15	0	0	3	13	79
True Blue Core																
University College	0	0	0	0	0	0	0	0	0	0	0	0	0	0	0	0
University Studies	9	3	13	5	1	0	0	31	6	3	3	0	2	4	13	31
Total	9	3	13	5	1	0	0	31	6	3	3	0	2	4	13	31
University Honors College																
James E. Walker Library	0	0	0	0	0	0	1	1	1	0	0	0	0	0	0	1
Collection Development and Management	8	1	0	0	0	0	0	9	2	6	1	0	0	0	0	9
User Services	13	1	0	0	0	0	0	14	5	6	3	0	0	0	0	14
Total	21	2	0	0	0	0	0	23	7	12	4	0	0	0	0	23
Grand Total	520	133	167	59	24	30	6	939	332	206	148	18	9	59	167	939

Excludes Military Science, Post Retiree, and Post Doctoral faculty members; faculty on full reassignment, leave of absence, or sick leave

* T or T9 = Tenured, TT or K9 = Tenure Track, Temp or N9 = Full-Time Temporary, Inst or NI = Instructor Track, Coor or NK = Coordinator Track, Clin/PP or NN = Clinical/Professional Practice Track, Res or NR = Research Track

** 1 = Professor, 2 = Associate Professor, 3 = Assistant Professor 7 = Master Instructor, 6 = Senior Instructor, 4 = Instructor, 5 = Lecturer

**MIDDLE TENNESSEE STATE UNIVERSITY
UNIVERSITY PROVOST
OCTOBER BUDGET 2024-2025**



Please refer to the individual organization charts of University College and Office of Student Success, College of Graduate Studies and Office of Research and Sponsored Programs, Enrollment Services, and Office of International Affairs

OFFICE OF THE UNIVERSITY PROVOST

University Provost, Mark Byrnes, Professor

Vice Provost for Academic Administration and Resources, Rebecca Cole

Vice Provost for Academic Programs, Amy Aldridge, Professor

Vice Provost for Enrollment Management, Laurie Witherow

Vice Provost for Faculty and Strategic Initiatives, Brian Hinote, Professor

Vice Provost for International Affairs, Robert Summers, Professor

Vice Provost for Research and Dean College of Graduate Studies, David Butler, Professor

Vice Provost for Planning and Effectiveness, Mary Hoffschwelle, Professor

Vice Provost for Student Success and Dean of the University College, Richard Sluder, Professor

Associate Vice Provost for Enrollment Services, Vacant

Associate Vice Provost for International Affairs, Rehab Ghazal

Associate Vice Provost for Online Learning, Trey Martindale

Associate Vice Provost for Student Success, Michelle Arnold

Associate Vice Provost for Student Success, Jonell Hinsey

Assistant Vice Provost for Institutional Accreditation, Layne Bryant

Assistant Vice Provost for Institutional Effectiveness, Planning, and Research, Christopher Brewer

Associate Dean, College of Graduate Studies, Amy Harris, Professor

Associate Dean, University College, John Burchfield

Assistant to the University Provost, Allison McGoffin

Director, Academic Integrity, Michael Baily

Directors, Faculty Development - Learning, Teaching, and Innovative Technologies Center, Interim
Jennifer Caputo, Professor
John Carter, Associate Professor

Director, Free Speech Center, Kenneth Paulson, Professor Emeritus

Director, MT Engage, Julie Myatt, Professor

Director, True Blue Core, Susan Myers-Shirk, Professor

Senior Advisor for Veterans and Leadership Initiatives, Lieutenant General (ret.) Keith Huber, Professor

Manager, Academic Space Planning, David Edgar

Specialist, Business Process, Sabrina Wright

Specialist, Curriculum, Mitzi Brandon

Specialist, Faculty Recruitment, Mitzi Dunkley

Specialist, Senior Resource, Allyson Baugh

ACADEMIC DEANS

Dean, College of Basic and Applied Sciences, Gregory Van Patten, Professor

Dean, College of Behavioral and Health Sciences, Peter Grandjean, Professor

Dean, Jennings A. Jones College of Business, Joyce Heames, Professor

Dean, College of Education, Neporcha Cone, Professor

Dean, College of Liberal Arts, Leah Lyons, Professor

Dean, College of Media and Entertainment, Beverly Keel, Professor

Dean, University College, Richard Sluder, Professor

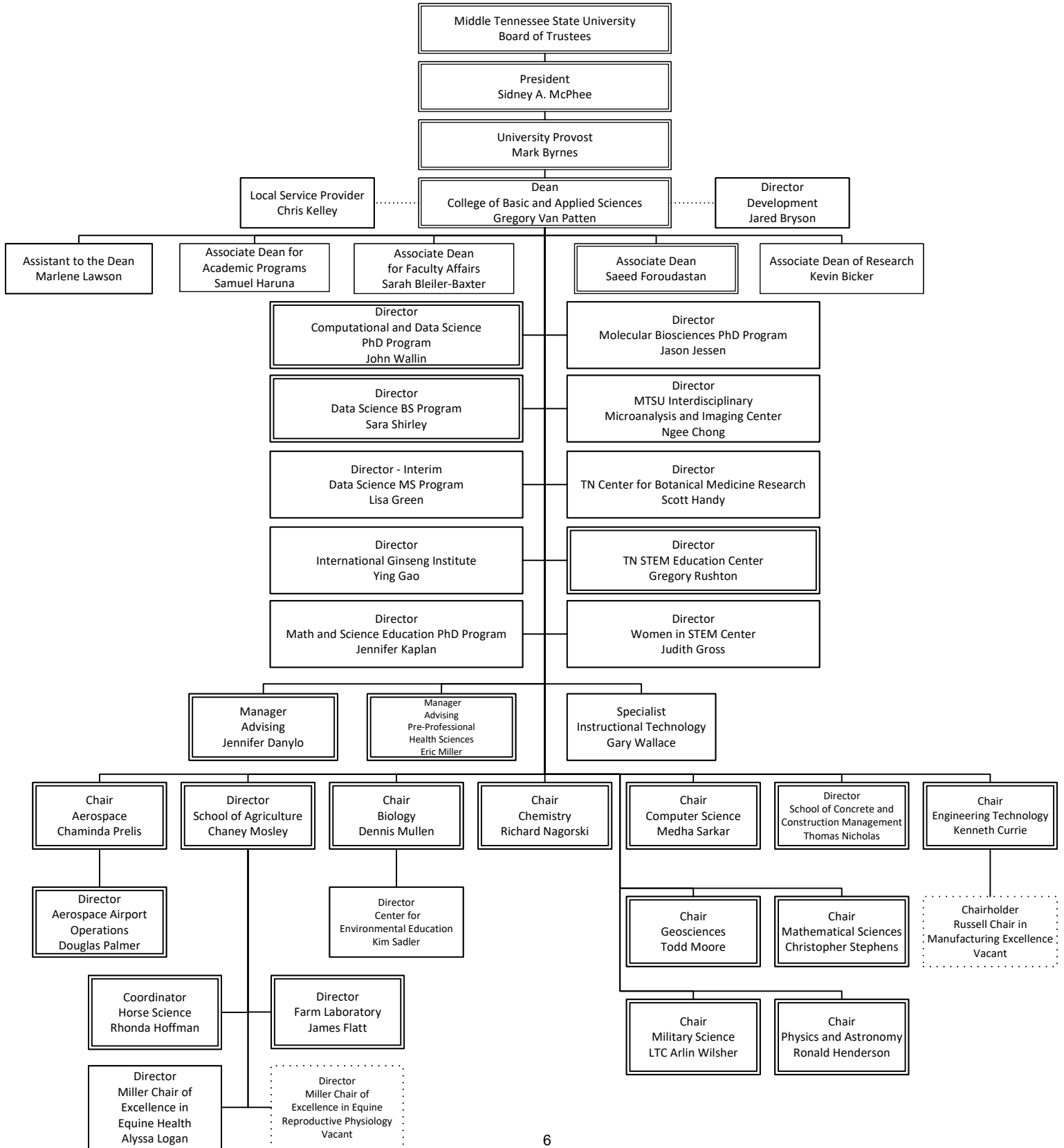
Dean, University Honors College, John Vile, Professor

Dean, James E. Walker Library, Kathleen Schmand, Professor

Dean, College of Graduate Studies, David Butler, Professor

This page intentionally left blank

**MIDDLE TENNESSEE STATE UNIVERSITY
COLLEGE OF BASIC AND APPLIED SCIENCES
OCTOBER BUDGET 2024-2025**



COLLEGE OF BASIC AND APPLIED SCIENCES

Dean, P. Gregory Van Patten, Professor

Associate Dean, Saeed Foroudastan, Professor

Associate Dean for Academic Programs, Samuel Haruna, Associate Professor

Associate Dean of Faculty Affairs, Sarah Bleiler-Baxter, Professor

Associate Dean of Research, Kevin Bicker, Professor

Assistant to the Dean, Marlene Lawson

Chairholder, Robert E and Georgianna West Russell Chair in Manufacturing Excellence, Vacant

John C. Miller Chair of Excellence in Equine Reproductive Physiology, Vacant

Mary E. Miller Chair of Excellence in Equine Health, Alyssa Logan, Associate Professor

Director of Aerospace Airport Operations, Douglas Palmer

Director, Center for Environmental Education, Kim Sadler, Professor

Director, Computational and Data Science PhD Program, John Wallin, Professor

Director, Data Science BS Program, Sara Shirley, Professor

Director, Data Science MS Program, Interim, Lisa Green, Associate Professor

Director, Development, Jared Bryson

Director, Farm Laboratory, James Flatt

Director, International Ginseng Institute, Ying Gao, Professor

Director, Math and Science Education PhD Program, Jennifer Kaplan, Professor

Director, Molecular Biosciences PhD Program, Jason Jessen, Professor

Director, MTSU Interdisciplinary Microanalysis and Imaging Center, Ngee Chong, Professor

Director, Tennessee Center for Botanical Medicine Research, Scott Handy, Professor

Director, Tennessee STEM Education Center, Gregory Rushton, Professor

Director, Women in STEM Center, Judith Gross, Professor

Coordinator, Horse Science, Rhonda Hoffman, Professor

Local Service Provider, Chris Kelley

Manager, Advising, Jennifer Danylo

Manager, Advising , Pre-Professional Health Sciences, Eric Miller

Specialist, Instructional Technology, Gary Wallace

ACADEMIC DEPARTMENTS

Chairperson, Aerospace, Chaminda Prelis, Associate Professor

Director, School of Agriculture, Chaney Mosley, Associate Professor

Chairperson, Biology, Dennis Mullen, Professor

Chairperson, Chemistry, Richard Nagorski, Professor

Chairperson, Computer Science, Medha Sarkar, Professor

Director, School of Concrete and Construction Management, Thomas Nicholas, Professor

Chairperson, Engineering Technology, Kenneth Currie, Professor

Chairperson, Geosciences, Todd Moore, Professor

Chairperson, Mathematical Sciences, Christopher Stephens, Professor

Chairperson, Military Science, LTC Arlin Wilsher

Chairperson, Physics and Astronomy, Ronald Henderson, Professor

Faculty Name	Code	Code	Job Title	Number
Aerospace				
Beckman, Wendy S	T9	1	Professor	101130
Callender, Mark N	T9	1	Professor	101180
Craig, Paul A	T9	1	Professor	101020
Georgiou, Andrea M	T9	1	Professor	101100
Allen, Harry W	T9	2	Associate Professor	101160
Babb, Tyler A	T9	2	Associate Professor	102050
Corns, Kevin M	T9	2	Associate Professor	107230
Gossett, Stephen L	T9	2	Associate Professor	101150
Hawkins, Joseph C	T9	2	Associate Professor	101070
Neff, Peter S	T9	2	Associate Professor	101030
Prelis, Chaminda S	T9	2	Chairperson - 12 month	101005
Rosser, Timothy G	K9	2	Associate Professor	101210
Smith, Carlos J	T9	2	Associate Professor	101140
Cifuentes Sanchez, Fernando D	NN	3	Assistant Professor	288010
Fowler, Robert	K9	3	Assistant Professor	103570
McDonald, Collin D	K9	3	Assistant Professor	319040
Mosey, Paul T	K9	3	Assistant Professor	101220
Pleasants, William C	K9	3	Assistant Professor	117010
Rutschow, Kenneth T	NN	3	Assistant Professor	114260
Lundberg, Alexandria R	NK	4	Instructor	101050
Waters, Harley L	N9	5	Lecturer	101040
<i>Adjustments (Post Retiree, full reassignment, leave of absence, sick leave, etc.) - excluded from Total Faculty count:</i>				
Dorris, Terry E	T9	2	Associate Professor	101110

Summary

Tenured (T9):	12	Professor (1):	4
Tenure Track (K9):	5	Associate Professor (2):	9
Full-Time Temporary (N9):	1	Assistant Professor (3):	6
Instructor Track (NI):	0	Master Instructor (7):	0
Coordinator Track (NK):	1	Senior Instructor (6):	0
Clinical/Professional Practice Track (NN):	2	Instructor (4):	1
Research Track (NR):	0	Lecturer (5):	1

Total Faculty: 21

Faculty Name	Code	Code	Job Title	Number
Agriculture				
Carter, Jessica G	T9	1	Professor	109360
Cui, Song	T9	1	Professor	105020
Downs, Kevin M	T9	1	Professor	102110
Gao, Ying	T9	1	Professor	120160
Hoffman, Rhonda M	T9	1	Professor	102120
Phillips, Nathan C	T9	1	Professor	102100
Gardner, Justin G	T9	2	Associate Professor	102030
Haruna, Samuel I	T9	2	Associate Professor	102130
Mosley, Chaney W	T9	2	Director	102005
O'Brien, Keely V	K9	3	Assistant Professor	102160
Rego, Andrea R	NK	6	Senior Instructor	301030
Foley, Caitlin A	NK	4	Instructor	114250
Parton, Calvin B	NN	4	Instructor	125190
Vaught, Alanna L	NK	4	Instructor	102010

Miller Chair Equine Reproductive Physiology

Miller Chair Equine Reproductive Health

Logan, Alyssa A	NN	3	Assistant Professor - 12 month	564030
-----------------	----	---	--------------------------------	--------

Tennessee STEM Education Center

Ragland, Kevin D	NR	2	Associate Professor - 12 month	367020
------------------	----	---	--------------------------------	--------

Adjustments (Post Retiree, full reassignment, leave of absence, sick leave, etc.) - excluded from Total Faculty count:

Summary

Tenured (T9):	9	Professor (1):	6
Tenure Track (K9):	1	Associate Professor (2):	4
Full-Time Temporary (N9):	0	Assistant Professor (3):	2
Instructor Track (NI):	0	Master Instructor (7):	0
Coordinator Track (NK):	3	Senior Instructor (6):	1
Clinical/Professional Practice Track (NN):	2	Instructor (4):	3
Research Track (NR):	1	Lecturer (5):	0

Total Faculty: 16

Faculty Name	Code	Code	Job Title	Number
Biology				
Altman, Elliot C	T9	1	Professor	103560
Bailey, Frank C	T9	1	Professor	103330
Bergemann, Sarah E	T9	1	Professor	103510
Cobb, Vincent A	T9	1	Professor	103030
Farone, Anthony L	T9	1	Professor	103130
Farone, Mary B	T9	1	Professor	103170
Howard, Robert S	T9	1	Professor	103340
Jessen, Jason R	T9	1	Professor	103040
Klukowski, Matthew	T9	1	Professor	103280
Leblond, Jeffrey D	T9	1	Professor	103430
Miller, Brian T	T9	1	Professor	103210
Mullen, Dennis M	T9	1	Chairperson	103005
Nelson, David E	T9	1	Professor	113330
Newsome, Anthony L	T9	1	Professor	103110
Rutledge, Michael L	T9	1	Professor	103380
Sadler, Kim C	T9	1	Professor	103460
Seipelt-Thiemann, Rebecca L	T9	1	Professor	103440
Stewart, William C	T9	1	Professor	103270
Walck, Jeffrey L	T9	1	Professor	103150
Zamora, John M	T9	1	Professor	103050
Elrod-Erickson, Matthew J	T9	2	Associate Professor	103400
Herlihy, Christopher R	T9	2	Associate Professor	103390
Jetton, Amy E	T9	2	Associate Professor	103320
Robertson, James B	T9	2	Associate Professor	103060
Walker, Donald M	T9	2	Associate Professor	103160

Faculty Name	Code	Code	Job Title	Number
Biology (cont.)				
Arbour, Jessica H	K9	3	Assistant Professor	103070
Barnes, Maryann E	K9	3	Assistant Professor	103180
Easson, Cole G	K9	3	Assistant Professor	103290
Ormerod, Kiel G	K9	3	Assistant Professor	103360
Weissmiller, April M	K9	3	Assistant Professor	103190
Brown, Danielle D	NI	4	Instructor	103220
Green, Heather A	NK	4	Instructor	103530
Hidayati, Siti N	NI	4	Instructor	103120
Scott, Fonya C	NN	4	Instructor	288020
Bowling, Jonathan L	N9	5	Lecturer	105010
Massengill, Amy L	N9	5	Lecturer	103140
Troelstrup, Angelique M	N9	5	Lecturer	103410

Adjustments (Post Retiree, full reassignment, leave of absence, sick leave, etc.) - excluded from Total Faculty count:

Gardner, Grant E	T9	1	Professor	107080
------------------	----	---	-----------	--------

Summary

Tenured (T9):	25	Professor (1):	20
Tenure Track (K9):	5	Associate Professor (2):	5
Full-Time Temporary (N9):	3	Assistant Professor (3):	5
Instructor Track (NI):	2	Master Instructor (7):	0
Coordinator Track (NK):	1	Senior Instructor (6):	0
Clinical/Professional Practice Track (NN):	1	Instructor (4):	4
Research Track (NR):	0	Lecturer (5):	3

Total Faculty: 37

Faculty Name	Code	Code	Job Title	Number
Chemistry				
Bicker, Kevin L	T9	1	Professor	104330
Chong, Ngee S	T9	1	Professor	104040
Ding, Keying	T9	1	Professor	104440
DiVincenzo, John P	T9	1	Professor	104310
Friedli, Andrienne C	T9	1	Professor	104030
Gross, Judith M	T9	1	Professor	104060
Handy, Scott T	T9	1	Professor	104400
Ilsley, William H	T9	1	Professor	104180
Kline, Paul C	T9	1	Professor	104080
Kong, Jing	T9	1	Professor	107510
MacDougall, Preston J	T9	1	Professor	104320
Melton, Tammy J	T9	1	Professor	104110
Nagorski, Richard W	T9	1	Chairperson	104005
Ooi, Beng G	T9	1	Professor	104190
Patterson, Patricia M	T9	1	Professor	104120
Phelps, Amy J	T9	1	Professor	104100
Sanger, Michael J	T9	1	Professor	104140
Volkov, Anatoliy	T9	1	Professor	104410
Burden, Donald A	T9	2	Associate Professor	104130
Chusuei, Charles C	T9	2	Associate Professor	104050
Miller, Justin M	T9	2	Associate Professor	103080
Patterson, Dwight J	T9	2	Associate Professor	104370
Wang, Chengshan	T9	2	Associate Professor	104160
Banerjee, Souvik	K9	3	Assistant Professor	104150
Hietsoi, Oleksandr	NR	3	Assistant Professor - 12 month	104470
Hosbein, Kathryn N	K9	3	Assistant Professor	104090
Gruppi, Francesca	NK	6	Senior Instructor	104450
Friedman, David B	NK	4	Instructor	104260
Pierce, Sarah S	NK	4	Instructor	104360
Wind, Allison O	NI	4	Instructor	104210

Faculty Name	Code	Code	Job Title	Number
Chemistry (cont.)				
Ayangbola, Oluwatobiloba T	N9	5	Lecturer	104270
Frick, Tasha M	N9	5	Lecturer	104300
Tennessee STEM Education Center				
Rushton, Gregory T	T9	1	Director	367030

Adjustments (Post Retiree, full reassignment, leave of absence, sick leave, etc.) - excluded from Total Faculty count:

Summary			
Tenured (T9):	24	Professor (1):	19
Tenure Track (K9):	2	Associate Professor (2):	5
Full-Time Temporary (N9):	2	Assistant Professor (3):	3
Instructor Track (NI):	1	Master Instructor (7):	0
Coordinator Track (NK):	3	Senior Instructor (6):	1
Clinical/Professional Practice Track (NN):	0	Instructor (4):	3
Research Track (NR):	1	Lecturer (5):	2
Total Faculty:	33		

Faculty Name	Code	Code	Job Title	Number
Computer Science				
Dong, Zhijiang	T9	1	Professor	137030
Li, Cen	T9	1	Professor	137160
Phillips, Joshua L	T9	1	Professor	137120
Sarkar, Medha S	T9	1	Chairperson	137005
Seo, Suk J	T9	1	Professor	137110
Barbosa, Salvador E	T9	2	Associate Professor	137020
Gu, Yi	T9	2	Associate Professor	137050
Al Tobasei, Rafet F	K9	3	Assistant Professor	107460
Poudel, Khem N	K9	3	Assistant Professor	137100
Ranganathan, Jaishree	K9	3	Assistant Professor	137190
Sainju, Arpan M	K9	3	Assistant Professor	137070
Upadhyay, Kritagya R	K9	3	Assistant Professor	137040
Yang, Xin	K9	3	Assistant Professor	103450
Zhang, Letian	K9	3	Assistant Professor	137170
Smith, Robert W	N9	5	Lecturer	137080

Adjustments (Post Retiree, full reassignment, leave of absence, sick leave, etc.) - excluded from Total Faculty count:

Summary			
Tenured (T9):	7	Professor (1):	5
Tenure Track (K9):	7	Associate Professor (2):	2
Full-Time Temporary (N9):	1	Assistant Professor (3):	7
Instructor Track (NI):	0	Master Instructor (7):	0
Coordinator Track (NK):	0	Senior Instructor (6):	0
Clinical/Professional Practice Track (NN):	0	Instructor (4):	0
Research Track (NR):	0	Lecturer (5):	1
Total Faculty:	15		

Faculty Name	Code	Code	Job Title	Number
Concrete and Construction Management				
Huddleston, Jonathan J	NN	1	Professor	105290
Nicholas, Thomas	T9	1	Director	179005
Yang, Zhifu	T9	1	Professor	105210
Avila, Jacob A	T9	2	Associate Professor	105050
Gormley, Thomas C	NN	2	Associate Professor	724010
Knight, Marcus L	T9	2	Associate Professor	105260
Vanhook, Eddie D	NN	2	Associate Professor	105150
Sabih, Gauhar	K9	3	Assistant Professor	105070
Wang, Ning	K9	3	Assistant Professor	126450
Overall, Kevin E	NN	4	Instructor	179030
Karanja, Pauline W	N9	5	Lecturer	112160

Adjustments (Post Retiree, full reassignment, leave of absence, sick leave, etc.) - excluded from Total Faculty count:

Summary

Tenured (T9):	4	Professor (1):	3
Tenure Track (K9):	2	Associate Professor (2):	4
Full-Time Temporary (N9):	1	Assistant Professor (3):	2
Instructor Track (NI):	0	Master Instructor (7):	0
Coordinator Track (NK):	0	Senior Instructor (6):	0
Clinical/Professional Practice Track (NN):	4	Instructor (4):	1
Research Track (NR):	0	Lecturer (5):	1
Total Faculty:	11		

Faculty Name	Code	Code	Job Title	Number
Data Science Program				
Nkansah, Emmanuel	N9	5	Lecturer	480020

Adjustments (Post Retiree, full reassignment, leave of absence, sick leave, etc.) - excluded from Total Faculty count:

Summary			
Tenured (T9):	0	Professor (1):	0
Tenure Track (K9):	0	Associate Professor (2):	0
Full-Time Temporary (N9):	1	Assistant Professor (3):	0
Instructor Track (NI):	0	Master Instructor (7):	0
Coordinator Track (NK):	0	Senior Instructor (6):	0
Clinical/Professional Practice Track (NN):	0	Instructor (4):	0
Research Track (NR):	0	Lecturer (5):	1
Total Faculty:	1		

Faculty Name	Code	Code	Job Title	Number
Engineering Technology				
Currie, Kenneth R	T9	1	Chairperson	105005
Miao, Lei	T9	1	Professor	105080
Sbenaty, Saleh M	T9	1	Professor	105090
Bedekar, Vishwas	T9	2	Associate Professor	105030
Faezipour, Misagh	T9	2	Associate Professor	105120
Mohebbi, Mina	T9	2	Associate Professor	105040
Vargas, Jorge M	T9	2	Associate Professor	113340
Hossain, Mohammad A	K9	3	Assistant Professor	105180
Zhang, Hongbo	K9	3	Assistant Professor	914010
Saavedra, Antonio F	NI	4	Instructor	101200
Aljohani, Muhammed A	N9	5	Lecturer	105160
Ledoux, Elissa D	N9	5	Lecturer	127090
Murphy, Scarlett M	N9	5	Lecturer	102140
Rajeshirke, Mithila C	N9	5	Lecturer	105190

Adjustments (Post Retiree, full reassignment, leave of absence, sick leave, etc.) - excluded from Total Faculty count:

Summary			
Tenured (T9):	7	Professor (1):	3
Tenure Track (K9):	2	Associate Professor (2):	4
Full-Time Temporary (N9):	4	Assistant Professor (3):	2
Instructor Track (NI):	1	Master Instructor (7):	0
Coordinator Track (NK):	0	Senior Instructor (6):	0
Clinical/Professional Practice Track (NN):	0	Instructor (4):	1
Research Track (NR):	0	Lecturer (5):	4
Total Faculty:	14		

Faculty Name	Code	Code	Job Title	Number
Geosciences				
Abolins, Mark J	T9	1	Professor	125010
Cribb, Joshua W	T9	1	Professor	125030
Momm, Henrique G	T9	1	Professor	125040
Moore, Todd W	T9	1	Chairperson	125005
Aber, Jeremy W	T9	2	Associate Professor	125070
El Kadiri, Racha	T9	2	Associate Professor	125080
Lobegeier, Melissa K	T9	2	Associate Professor	125020
Hass, Alisa L	K9	3	Assistant Professor	125120
Price, Brittany N	K9	3	Assistant Professor	125110
Shinkareva, Galina	K9	3	Assistant Professor	129110
Collins, Laura R	NI	4	Instructor	125160
Brown, Alan D	N9	5	Lecturer	125130

Adjustments (Post Retiree, full reassignment, leave of absence, sick leave, etc.) - excluded from Total Faculty count:

Summary			
Tenured (T9):	7	Professor (1):	4
Tenure Track (K9):	3	Associate Professor (2):	3
Full-Time Temporary (N9):	1	Assistant Professor (3):	3
Instructor Track (NI):	1	Master Instructor (7):	0
Coordinator Track (NK):	0	Senior Instructor (6):	0
Clinical/Professional Practice Track (NN):	0	Instructor (4):	1
Research Track (NR):	0	Lecturer (5):	1
Total Faculty:	12		

Faculty Name	Code	Code	Job Title	Number
Mathematical Sciences				
Baxter, Sarah K	T9	1	Professor	107370
Ding, Wandi	T9	1	Professor	107120
Hart, James B	T9	1	Professor	107040
Hong, Don	T9	1	Professor	107130
Huang, Rongjin	T9	1	Professor	107390
Kaplan, Jennifer J	T9	1	Professor	107490
Kimmins, Dovie L	T9	1	Professor	107300
Leander, Rachel N	T9	1	Professor	107170
Lischka, Alyson E	T9	1	Professor	107030
Martin, Mary B	T9	1	Professor	107290
Rowell, Ginger H	T9	1	Professor	107260
Stephens, David C	T9	1	Chairperson	107005
Strayer, Jeremy F	T9	1	Professor	107100
Ye, Dong	T9	1	Professor	107160
Zha, Xiaoya	T9	1	Professor	107020
Barnwal, Rajesh K	T9	2	Associate Professor	107200
Green, Lisa B	T9	2	Associate Professor	107250
Liu, Yeqian	T9	2	Associate Professor	107010
Manathunga, Vajira A	T9	2	Associate Professor	107410
Zhang, Ping	T9	2	Associate Professor	107110
Liu, Yanfang	K9	3	Assistant Professor	457010
Rimal, Ramchandra	K9	3	Assistant Professor	136310
Saunders, John C	K9	3	Assistant Professor	107340
Wang, Donglin	K9	3	Assistant Professor	107310
Wu, Yixiang	K9	3	Assistant Professor	107320
Xiong, Lu	K9	3	Assistant Professor	107270

Faculty Name	Code	Code	Job Title	Number
Mathematical Sciences (cont.)				
Abeykoon, Sumeda B	N9	5	Lecturer	107240
Adamson, Carla J	N9	5	Lecturer	107480
Ambahera, Asntr W	N9	5	Lecturer	107420
Elrod, Melody J	N9	5	Lecturer	119010
Hamlin, Victoria	N9	5	Lecturer	107360
Kassae, Ameneh M	N9	5	Lecturer	107470
Long, Jie	N9	5	Lecturer	107190
Murdock, Julie A	N9	5	Lecturer	107430
Rushton, Tricia A	N9	5	Lecturer	107180
Schmidt, John W	N9	5	Lecturer	104420
Viglione, Rebecca T	N9	5	Lecturer	107150

Adjustments (Post Retiree, full reassignment, leave of absence, sick leave, etc.) - excluded from Total Faculty count:

Calahan, Rebecca S			Post Retirement Faculty	
Khaliq, Abdulqayyum M	T9	1	Professor	107070
Lovett, Jennifer N	T9	2	Associate Professor	115110
Zijlstra, Jan	T9	2	Associate Professor	107220

Summary

Tenured (T9):	20	Professor (1):	15
Tenure Track (K9):	6	Associate Professor (2):	5
Full-Time Temporary (N9):	11	Assistant Professor (3):	6
Instructor Track (NI):	0	Master Instructor (7):	0
Coordinator Track (NK):	0	Senior Instructor (6):	0
Clinical/Professional Practice Track (NN):	0	Instructor (4):	0
Research Track (NR):	0	Lecturer (5):	11

Total Faculty: 37

Faculty Name	Code	Code	Job Title	Number
Military Science				
Wilsher, Arlin R			Lieutenant Colonel, Professor	
Bennett, Kelly M			Captain, Assistant Professor	
Hahn, Zachary P			Captain, Assistant Professor	
Page, Michael L			Captain, Assistant Professor	
Bujnowski, James J			Master Sergeant, Lecturer	
Currier, Clint S			Master Sergeant, Lecturer	

Adjustments (Post Retiree, full reassignment, leave of absence, sick leave, etc.) - excluded from Total Faculty count:

All Military Science faculty members are excluded from the Grand Total faculty count on page 1

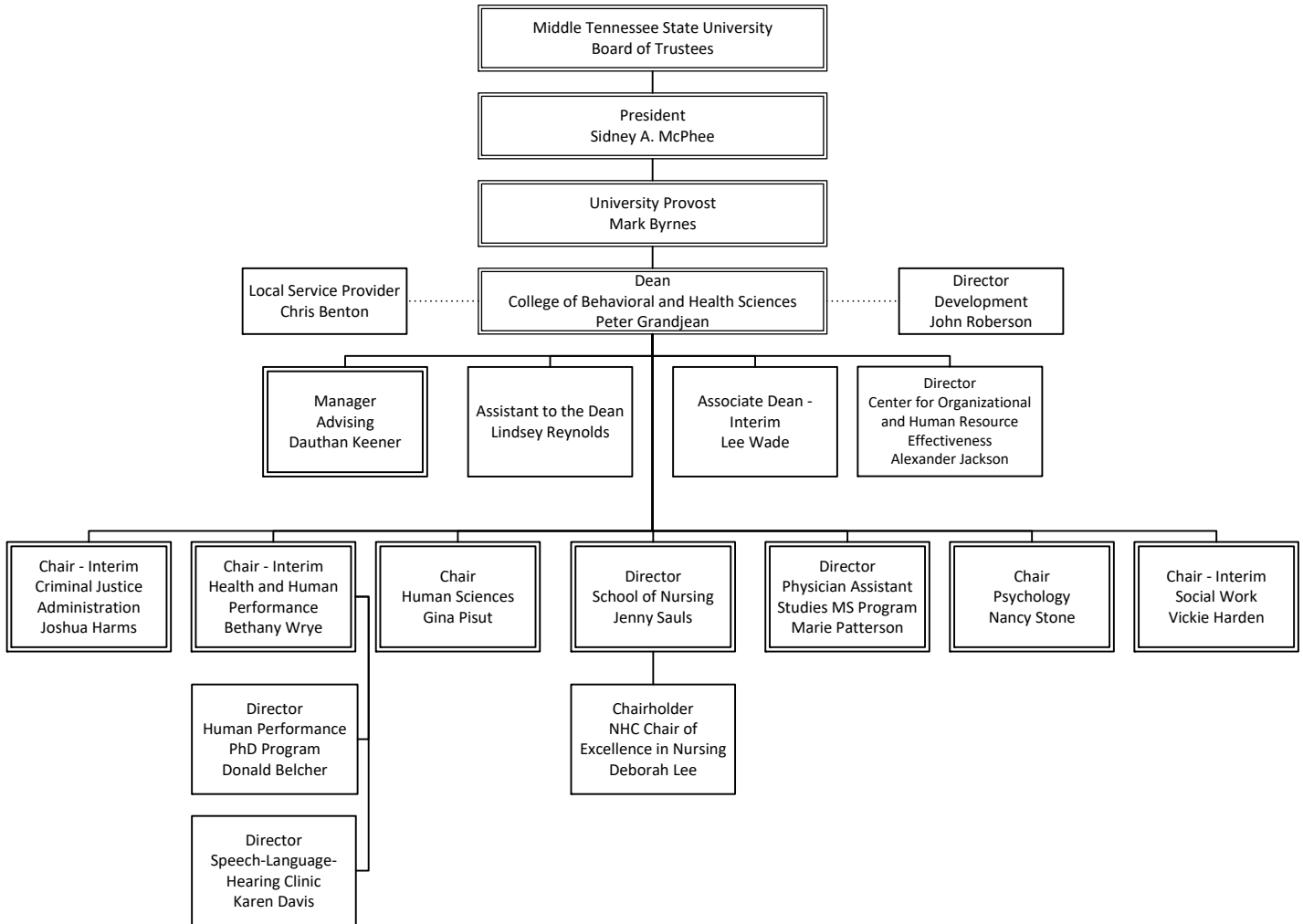
Faculty Name	Code	Code	Job Title	Number
Physics and Astronomy				
Erenso, Daniel B	T9	1	Professor	156140
Henderson, Ronald H	T9	1	Chairperson	156005
Higgins, Charles A	T9	1	Professor	156080
Wallin, John F	T9	1	Professor	137060
Neupane, Suman	T9	2	Associate Professor	156010
Smith, Nathanael	T9	2	Associate Professor	156130
Terletska, Hanna M	T9	2	Associate Professor	156060
Ford, Janaruth H	NN	3	Assistant Professor	156150
Kamali Moghaddam, Saeed	NR	3	Assistant Professor	104460
Villanova, John W	K9	3	Assistant Professor	156070
Youngkins, Valery P	NI	7	Master Instructor	156160
Perevalova, Irina A	NI	4	Instructor	156040
Mahurin, Robert S	N9	5	Lecturer	156050
McPherson, Gregory T	N9	5	Lecturer	355100
Panta, Soma R	N9	5	Lecturer	144170

Adjustments (Post Retiree, full reassignment, leave of absence, sick leave, etc.) - excluded from Total Faculty count:

Summary

Tenured (T9):	7	Professor (1):	4
Tenure Track (K9):	1	Associate Professor (2):	3
Full-Time Temporary (N9):	3	Assistant Professor (3):	3
Instructor Track (NI):	2	Master Instructor (7):	1
Coordinator Track (NK):	0	Senior Instructor (6):	0
Clinical/Professional Practice Track (NN):	1	Instructor (4):	1
Research Track (NR):	1	Lecturer (5):	3
Total Faculty:	15		

**MIDDLE TENNESSEE STATE UNIVERSITY
COLLEGE OF BEHAVIORAL AND HEALTH SCIENCES
OCTOBER BUDGET 2024-2025**



COLLEGE OF BEHAVIORAL AND HEALTH SCIENCES

Dean, Peter Grandjean, Professor

Associate Dean, Interim, Lee Wade, Professor

Assistant to the Dean, Lindsey Reynolds

Chairholder, NHC Chair of Excellence in Nursing, Deborah Lee, Associate Professor

Director, Center for Organizational and Human Resource Effectiveness, Alexander Jackson, Associate Professor

Director, Development, John Roberson

Local Service Provider, Chris Benton

Manager, Advising, Dauthan Keener

ACADEMIC DEPARTMENTS

Chairperson, Criminal Justice Administration, Interim, Joshua Harms, Professor

Chairperson, Health and Human Performance, Interim, Bethany Wrye, Associate Professor

Chairperson, Human Sciences, Gina Pisut, Professor

Director, MS in Physician Assistant Studies, Marie Patterson, Assistant Professor

Director, School of Nursing, Jenny Sauls, Professor

Chairperson, Psychology, Nancy Stone, Professor

Chairperson, Social Work, Interim, Vickie Hardin, Associate Professor

Faculty Name	Code	Code	Job Title	Number
Criminal Justice Administration				
Harms, Joshua A	T9	1	Chairperson - Interim	121005
Jurkanin, Thomas J	T9	1	Professor	121090
Newman, Deborah W	T9	1	Professor	121040
Stickle, Benjamin F	T9	1	Professor	121030
Williams, Lynda R	NN	1	Professor	121160
Wright, Elizabeth Q	T9	1	Professor	109070
Rogers, Robert D	T9	2	Associate Professor	121070
Shulman, William L	T9	2	Associate Professor	121020
Smith, Carter F	K9	3	Assistant Professor	121080
Westmoreland, Christopher P	NI	4	Instructor	121150
Fantuzzi, Paul J	N9	5	Lecturer	103500
Tarr, Gregory	N9	5	Lecturer	124310

Adjustments (Post Retiree, full reassignment, leave of absence, sick leave, etc.) - excluded from Total Faculty count:

Summary			
Tenured (T9):	7	Professor (1):	6
Tenure Track (K9):	1	Associate Professor (2):	2
Full-Time Temporary (N9):	2	Assistant Professor (3):	1
Instructor Track (NI):	1	Master Instructor (7):	0
Coordinator Track (NK):	0	Senior Instructor (6):	0
Clinical/Professional Practice Track (NN):	1	Instructor (4):	1
Research Track (NR):	0	Lecturer (5):	2
Total Faculty:	12		

Faculty Name	Code	Code	Job Title	Number
Health and Human Performance				
Barry, Vaughn W	T9	1	Professor	118050
Binkley, Helen M	T9	1	Professor	118600
Caputo, Jennifer L	T9	1	Professor	118010
Coons, John M	T9	1	Professor	118630
Dunlap, John R	T9	1	Professor	118340
Jubenville, Colby B	T9	1	Professor	118120
Owusu, Andrew A	T9	1	Professor	118380
Sanderson, Sonya L	T9	1	Professor	118030
Story, Chandra R	T9	1	Professor	118390
Belcher, Donald G	T9	2	Associate Professor	118620
Blankenship, Kathryn G	T9	2	Associate Professor	130110
Bowman, Angela S	T9	2	Associate Professor	118710
Davis, Karen C	K9	2	Associate Professor	130170
Farnsworth, James L	K9	2	Associate Professor	118060
Grubbs, Brandon F	T9	2	Associate Professor	118100
Johnson, Samantha L	T9	2	Associate Professor	118170
Stone, Kahler W	T9	2	Associate Professor	118020
Whalen, Elizabeth A	T9	2	Associate Professor	225030
Wrye, Bethany A	T9	2	Chairperson - Interim	118005
Bello, Marissa L	K9	3	Assistant Professor	145150
Lauber, Danielle E	K9	3	Assistant Professor	118040
Liu, Yi	K9	3	Assistant Professor	118210
Son, Hwayong	K9	3	Assistant Professor	118580
Stringer, Kristi L	K9	3	Assistant Professor	118130
Tan, Pei Sze Karen	K9	3	Assistant Professor	118140
Wendelken, Meghan E	K9	3	Assistant Professor	120030

Faculty Name	Code	Code	Job Title	Number
Health and Human Performance (cont.)				
Clanton, Beverly K	NK	7	Master Instructor	118110
Phillips, Kristin L	NK	7	Master Instructor	118080
Ramos, Angela S	NK	7	Master Instructor	118070
Clark, David N	NK	6	Senior Instructor	118200
Ramos Grasa, Francisco J	NI	4	Instructor	118150
Stone, Katy L	NI	4	Instructor	123640
Armstrong-Owczkowski, Merry H	N9	5	Lecturer	355110
Brooks, Katherine T	N9	5	Lecturer	130010
Craze, Jennifer R	N9	5	Lecturer	118370
Hodges, Hillary L	N9	5	Lecturer	109310
Josey, Shannon S	N9	5	Lecturer	118090
Novo, Mario G	N9	5	Lecturer	118610
Schrader, Lisa T	N9	5	Lecturer	355120
Smith, Kenneth H	N9	5	Lecturer	118410
Wilson, Timothy E	N9	5	Lecturer	118400

Adjustments (Post Retiree, full reassignment, leave of absence, sick leave, etc.) - excluded from Total Faculty count:

Huff, Ian P	NN	2	Associate Professor	113300
McKissick, Russell C	NN	2	Associate Professor	131170

Summary

Tenured (T9):	17	Professor (1):	9
Tenure Track (K9):	9	Associate Professor (2):	10
Full-Time Temporary (N9):	9	Assistant Professor (3):	7
Instructor Track (NI):	2	Master Instructor (7):	3
Coordinator Track (NK):	4	Senior Instructor (6):	1
Clinical/Professional Practice Track (NN):	0	Instructor (4):	2
Research Track (NR):	0	Lecturer (5):	9

Total Faculty: 41

Faculty Name	Code	Code	Job Title	Number
Human Sciences				
Belcher, Deborah G	T9	1	Professor	119050
Colson, Janet M	T9	1	Professor	119160
Cottle, Frederick S	T9	1	Professor	119190
Julian, Kristi D	T9	1	Professor	119090
Kwon, Jasmin H	T9	1	Professor	119330
Pisut, Gina R	T9	1	Chairperson	119005
Poirier, Sandra L	T9	1	Professor	119260
Rudd, Lauren E	T9	1	Professor	119130
Brickey, Janis	T9	2	Associate Professor	119180
Cook, Jane C	T9	2	Associate Professor	119060
Smith, Elizabeth A	T9	2	Associate Professor	109280
Oldham, Cary R	K9	3	Assistant Professor	119020
Pavel, Carrie H	K9	3	Assistant Professor	119140
Bogle, Virginia R	NI	7	Master Instructor	119080
Ayers, Cynthia D	NI	6	Senior Instructor	119120
Weir, Samantha R	NI	4	Instructor	119200
Fortson, Tiffany J	N9	5	Lecturer	119040
Harnack, Paula D	N9	5	Lecturer	207020
Harris, Sarah A	N9	5	Lecturer	126050
Shepherd, Lisa A	N9	5	Lecturer	123280

Adjustments (Post Retiree, full reassignment, leave of absence, sick leave, etc.) - excluded from Total Faculty count:

Summary			
Tenured (T9):	11	Professor (1):	8
Tenure Track (K9):	2	Associate Professor (2):	3
Full-Time Temporary (N9):	4	Assistant Professor (3):	2
Instructor Track (NI):	3	Master Instructor (7):	1
Coordinator Track (NK):	0	Senior Instructor (6):	1
Clinical/Professional Practice Track (NN):	0	Instructor (4):	1
Research Track (NR):	0	Lecturer (5):	4
Total Faculty:	20		

Faculty Name	Code	Code	Job Title	Number
Nursing				
Caswell Moore, Shelley P	T9	1	Professor	109330
Flagg, Amanda J	T9	1	Professor	109220
McInnis, Leighann T	T9	1	Professor	109010
Sauls, Jenny L	T9	1	Director - 12 month	109005
Stevens, Sherri L	T9	1	Professor	109150
Finch, Michelle L	T9	2	Associate Professor	109050
Lancaster, Barbara W	T9	2	Associate Professor	109260
Allen, Melissa K	NN	3	Assistant Professor	109250
Clark, Brittany A	NN	3	Assistant Professor	109100
Creighton, Yvonne M	K9	3	Assistant Professor	109170
Finch, Joyce A	K9	3	Assistant Professor	109020
Honey, Julie J	NN	3	Assistant Professor	109040
Hubbard, Mary L	NN	3	Assistant Professor	123215
Krabousanos, Leigh A	NN	3	Assistant Professor	109300
Marks, Brittany A	NN	3	Assistant Professor	109340
Murphree, Lisa K	K9	3	Assistant Professor	109120
Palicka, Melissa A	NN	3	Assistant Professor	109230
Plunk, Kristina M	NN	3	Assistant Professor	114060
Poole, TaRessa W	NN	3	Assistant Professor	109180
Randolph, Karin C	NN	3	Assistant Professor	109190
Taylor, Andrea	K9	3	Assistant Professor	118045
Tomlinson, Ashley N	NN	3	Assistant Professor	120020
Vickrey, William T	NN	3	Assistant Professor	109090
Westfall, Andrea C	NN	3	Assistant Professor	109030
Young, Rachel D	NN	3	Assistant Professor	109130
Omohundro, Laurie F	N9	5	Lecturer	105330

Faculty Name	Code	Code	Job Title	Number
Nursing (cont.)				
NHC Chair of Excellence in Nursing				
Lee, Deborah A	NN	1	Chairholder - 12 Month	017010

<i>Adjustments (Post Retiree, full reassignment, leave of absence, sick leave, etc.) - excluded from Total Faculty count:</i>				
Meeks, Richard C	T9	2	Associate Professor	109140

Summary				
Tenured (T9):	7		Professor (1):	6
Tenure Track (K9):	4		Associate Professor (2):	2
Full-Time Temporary (N9):	1		Assistant Professor (3):	18
Instructor Track (NI):	0		Master Instructor (7):	0
Coordinator Track (NK):	0		Senior Instructor (6):	0
Clinical/Professional Practice Track (NN):	15		Instructor (4):	0
Research Track (NR):	0		Lecturer (5):	1
Total Faculty:	27			

Faculty Name	Code	Code	Job Title	Number
Physician Assistant Studies				
Layne, Travis K	NN	3	Assistant Professor - 12 month	585050
Patterson, Catherine M	NN	3	Director - 12 month	585020

Adjustments (Post Retiree, full reassignment, leave of absence, sick leave, etc.) - excluded from Total Faculty count:

Eastham, Edward D	NN	2	Associate Professor - 12 month	585030
Colvin, Shannon M	NN	3	Assistant Professor - 12 month	585040
McAdams, Stephanie A	NN	3	Assistant Professor - 12 month	585070
McCrary, William B	NN	3	Assistant Professor - 12 month	585080
Patterson, Catherine M	NN	3	Director - 12 month	585020
Purcell, Kelsey M	NN	3	Assistant Professor - 12 month	631030
Rayburn, Jennifer T	NN	3	Assistant Professor - 12 month	585060

Summary

Tenured (T9):	0	Professor (1):	0
Tenure Track (K9):	0	Associate Professor (2):	0
Full-Time Temporary (N9):	0	Assistant Professor (3):	1
Instructor Track (NI):	0	Master Instructor (7):	0
Coordinator Track (NK):	0	Senior Instructor (6):	0
Clinical/Professional Practice Track (NN):	1	Instructor (4):	0
Research Track (NR):	0	Lecturer (5):	0

Total Faculty: 1

Faculty Name	Code	Code	Job Title	Number
Psychology				
Bernstein, Stuart E	T9	1	Professor	120390
Boyer-Pennington, Michelle E	T9	1	Professor	120210
Davis, Teresa L	T9	1	Professor	120490
Foster, Paul S	T9	1	Professor	120090
Frame, Mark C	T9	1	Professor	120040
Fuller, Dana K	T9	1	Professor	120270
Hein, Michael B	T9	1	Professor	120400
Langston, William E	T9	1	Professor	120430
Magne, Cyrille L	T9	1	Professor	120550
McCarthy, Patrick M	T9	1	Professor	120470
Pennington, John T	T9	1	Professor	120130
Stone, Nancy J	T9	1	Chairperson	120005
Tate, James C	T9	1	Professor	120500
Ujcich Ward, Kimberly J	T9	1	Professor	120100
Van Hein, Judith L	T9	1	Professor	120190
Holt, Aimee R	T9	2	Associate Professor	120360
Houston, James R	T9	2	Associate Professor	120300
Jackson, Alexander T	T9	2	Associate Professor	120220
Marshall, Seth J	T9	2	Associate Professor	120140
Schmidt, Greg W	T9	2	Associate Professor	120110
Berkowitz, Madeline R	K9	3	Assistant Professor	120060
Fahey, Margaret C	K9	3	Assistant Professor	120370
Gaby, Jessica M	K9	3	Assistant Professor	120420
Galizio, Ann I	K9	3	Assistant Professor	120330
Hinnenkamp, Jay E	K9	3	Assistant Professor	120200
Loveless, James P	K9	3	Assistant Professor	120230
Rogers, Tiffany D	K9	3	Assistant Professor	120290
Schoonover, Ciera E	K9	3	Assistant Professor	120180
Zeringue, Megan M	K9	3	Assistant Professor	129340

Faculty Name	Code	Code	Job Title	Number
Psychology (cont.)				
Teague, Corey M	NI	4	Instructor	120150
Walker, Shannon M	NI	4	Instructor	121120
Cohen, Jazzmin M	N9	5	Lecturer	712070
Corder, Leon M	N9	5	Lecturer	120310
Fernandez, Loraine R	N9	5	Lecturer	120010
Prater, Jessica D	N9	5	Lecturer	120170
Smith, Todd J	N9	5	Lecturer	120080
Suara, Zainab A	N9	5	Lecturer	120280

Murfree Chair of Excellence in Dyslexic Studies

Odegard, Timothy N	T9	1	Chairholder	022010
--------------------	----	---	-------------	--------

Adjustments (Post Retiree, full reassignment, leave of absence, sick leave, etc.) - excluded from Total Faculty count:

Littlepage, Glenn E			Post Retirement Faculty	
Odegard, Timothy N	T9	1	Chairholder	022010
Wallace, Monica A	T9	2	Associate Professor	120540

Summary

Tenured (T9):	20	Professor (1):	15
Tenure Track (K9):	9	Associate Professor (2):	5
Full-Time Temporary (N9):	6	Assistant Professor (3):	9
Instructor Track (NI):	2	Master Instructor (7):	0
Coordinator Track (NK):	0	Senior Instructor (6):	0
Clinical/Professional Practice Track (NN):	0	Instructor (4):	2
Research Track (NR):	0	Lecturer (5):	6

Total Faculty: 37

Faculty Name	Code	Code	Job Title	Number
Social Work				
Fontanesi-Seime, Margaret A	T9	1	Professor	168060
McElderry, Cathy G	T9	1	Professor	168090
Postlethwait, Ariana E	T9	1	Professor	168030
Harden, Vickie L	T9	2	Chairperson - Interim	168005
Dotson, Carmelita L	K9	3	Assistant Professor	168040
Owens-Gibson, Donna D	K9	3	Assistant Professor	123310
Widup, Amanda K	NK	4	Instructor	168110
Cox Wingo, Violet D	N9	5	Lecturer	168010
King, Timothy R	N9	5	Lecturer	355060
Langley, Jamie L	N9	5	Lecturer	168080
Teter, Jessica K	N9	5	Lecturer	168050

Adjustments (Post Retiree, full reassignment, leave of absence, sick leave, etc.) - excluded from Total Faculty count:

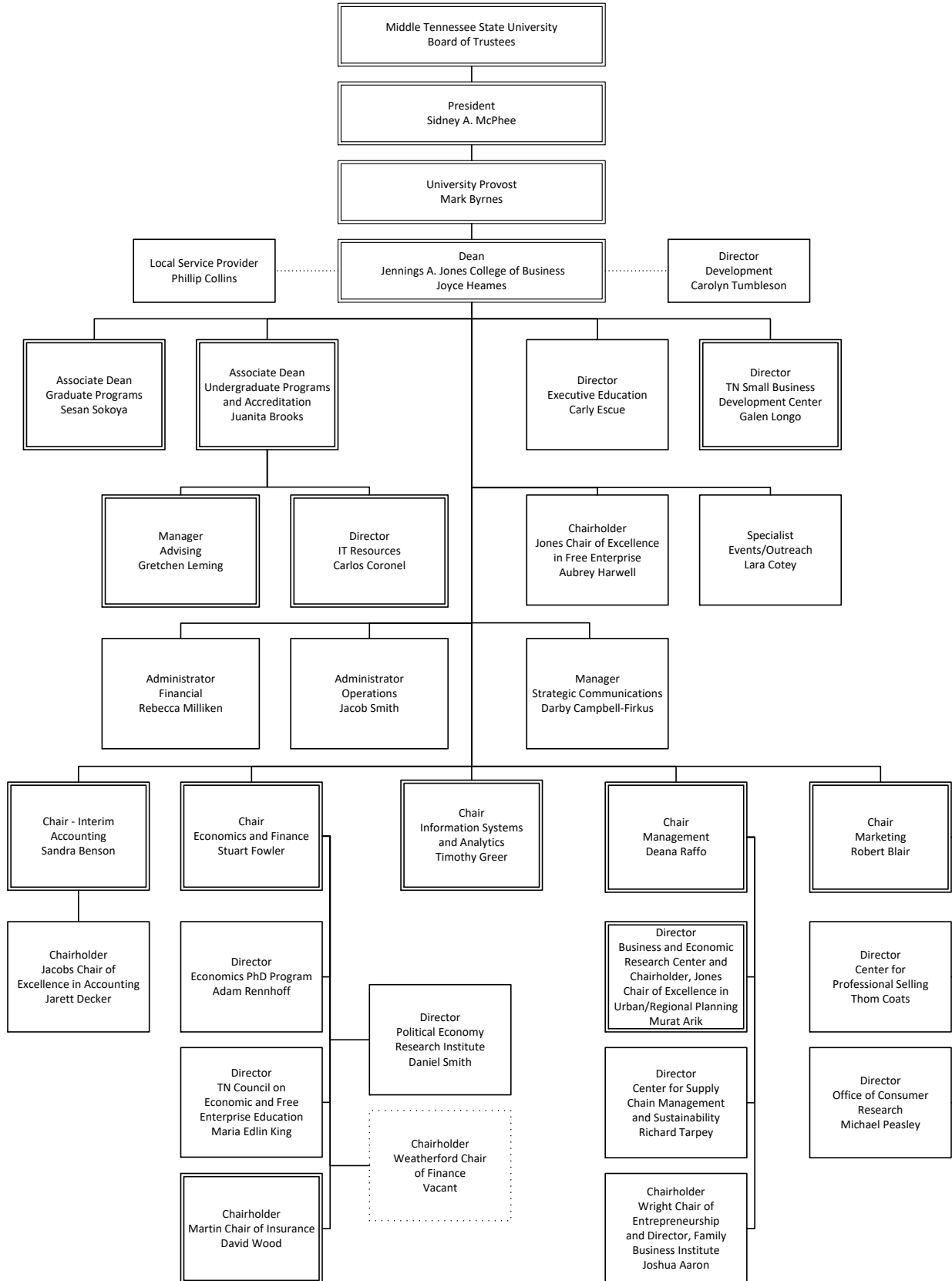
Turnage, Barbara F			Post Retirement Faculty	
Lamin, Sylvester A	K9	2	Associate Professor	168120

Summary

Tenured (T9):	4	Professor (1):	3
Tenure Track (K9):	2	Associate Professor (2):	1
Full-Time Temporary (N9):	4	Assistant Professor (3):	2
Instructor Track (NI):	0	Master Instructor (7):	0
Coordinator Track (NK):	1	Senior Instructor (6):	0
Clinical/Professional Practice Track (NN):	0	Instructor (4):	1
Research Track (NR):	0	Lecturer (5):	4

Total Faculty: 11

**MIDDLE TENNESSEE STATE UNIVERSITY
JENNINGS A. JONES COLLEGE OF BUSINESS
OCTOBER BUDGET 2024-2025**



JENNINGS A. JONES COLLEGE OF BUSINESS

Dean, Joyce Heames, Professor

Associate Dean, Graduate Programs, Sesan Sokoya, Professor

Associate Dean, Undergraduate Programs and Accreditation, Juanita Brooks, Professor

Chairholder, Joey A. Jacobs Chair of Excellence in Accounting, Jarett Decker, Professor

Chairholder, Jones Chair of Excellence in Free Enterprise, Aubrey Harwell

Chairholder, Jones Chair of Excellence in Urban and Regional Planning, Murat Arik, Associate Professor
Director, Business and Economic Research Center

Chairholder, Martin Chair of Insurance, David Wood, Professor

Chairholder, Weatherford Chair of Finance, Vacant

Chairholder, Wright Chair of Entrepreneurship, Joshua Aaron, Professor
Director, Family Business Institute

Director, Center for Professional Selling, Thom Coats, Professor

Director, Development, Carolyn Tumbleson

Director, Executive Education, Carly Escue

Director, Political Economy Research Institute, Daniel Smith, Professor

Director, Tennessee Council for Economic and Free Enterprise Education, Maria Edlin King

Director, IT Resources, Carlos Coronel

Director, Tennessee Small Business Development Center, Galen Longo

Administrator, Financial, Rebecca Milliken

Administrator, Operations, Jacob Smith

Local Service Provider, Philip Collins

Manager, Advising, Gretchen Leming

Manager, Strategic Communication, Darby Campbell-Firkus

Specialist, Events/Outreach, Lara Cotey

ACADEMIC DEPARMENTS

Chairperson, Accounting, Interim, Sandra Benson, Professor

Chairperson, Economics and Finance, Stuart Fowler, Professor

Chairperson, Information Systems and Analytics, Timothy Greer, Professor

Chairperson, Management, Deana Raffo, Professor

Chairperson, Marketing, Robert Blair, Professor

Faculty Name	Code	Code	Job Title	Number
Accounting				
Benson, Sandra S	T9	1	Chairperson - Interim	110005
Daniel, Lara W	T9	1	Professor	110250
Johns, Horace E	T9	1	Professor	110240
Kelton, Andrea S	T9	1	Professor	116320
Salter, Stephen B	T9	1	Professor	110140
Ward, Terry J	T9	1	Professor	110100
Bahmanziari, Tammy R	T9	2	Associate Professor	110080
Garven, Sarah A	T9	2	Associate Professor	110260
Harrington, Jeannie J	T9	2	Associate Professor	110020
Honaker, Kimberly H	T9	2	Associate Professor	110160
Scarlata, Audrey N	T9	2	Associate Professor	110190
Vagner, Brandon N	T9	2	Associate Professor	110010
Wermert, John G	T9	2	Associate Professor	110120
Williams, Kelly L	T9	2	Associate Professor	110170
Badger, Jack A	K9	3	Assistant Professor	110280
Ogunade, Kehinde M	K9	3	Assistant Professor	110070
Davis, Monica E	NK	7	Master Instructor	110050
Bradley, Susan K	N9	5	Lecturer	110150
Irvin, Wayne M	N9	5	Lecturer	200010
Thomas, Thomas W	N9	5	Lecturer	200030
Jacobs Chair of Excellence in Accounting				
Decker, Jarett B	NN	1	Chairholder	110060

Adjustments (Post Retiree, full reassignment, leave of absence, sick leave, etc.) - excluded from Total Faculty count:

Summary			
Tenured (T9):	14	Professor (1):	7
Tenure Track (K9):	2	Associate Professor (2):	8
Full-Time Temporary (N9):	3	Assistant Professor (3):	2
Instructor Track (NI):	0	Master Instructor (7):	1
Coordinator Track (NK):	1	Senior Instructor (6):	0
Clinical/Professional Practice Track (NN):	1	Instructor (4):	0
Research Track (NR):	0	Lecturer (5):	3
Total Faculty:	21		

Faculty Name	Code	Code	Job Title	Number
Economics and Finance				
Baum, Charles L	T9	1	Professor	113120
Deme, Mamit	T9	1	Professor	113140
Fayissa, Bichaka	T9	1	Professor	113170
Gamble, Keith J	T9	1	Professor	113090
Michello, Franklin A	T9	1	Professor	113020
Nagel, Gregory L	T9	1	Professor	113080
Rennhoff, Adam D	T9	1	Professor	113270
Roach, Michael A	T9	1	Professor	113320
Seagraves, Philip A	T9	1	Professor	113200
Zhao, Min	T9	1	Professor	113070
Zietz, Emily N	T9	1	Professor	113250
Fowler, Stuart J	T9	2	Chairperson	113005
Salter, Sean P	T9	2	Associate Professor	113100
Sarver, Frederick L	T9	2	Associate Professor	113240
Shirley, Sara E	T9	2	Associate Professor	113190
Sprick Schuster, Steven D	T9	2	Associate Professor	113280
Stark, Jeffrey R	T9	2	Associate Professor	113180
Suwanprasert, Wisarut	T9	2	Associate Professor	113150
Gamino, Aaron M	K9	3	Assistant Professor	113010
Jansen, Benjamin A	K9	3	Assistant Professor	113060
Ji, Shuangshuang	K9	3	Assistant Professor	113110
Qi, Quan	K9	3	Assistant Professor	113130
Cohen, Melissa L	N9	5	Lecturer	110210
Kattih, Nour	N9	5	Lecturer	111220

Faculty Name	Code	Code	Job Title	Number
Economics and Finance (cont.)				
Martin Chair of Insurance				
Wood, David D	T9	1	Chairholder	113040
Political Economy Research Institute				
Smith, Daniel J	T9	1	Director	113210
Weatherford Chair of Finance				

Adjustments (Post Retiree, full reassignment, leave of absence, sick leave, etc.) - excluded from Total Faculty count:

Tenured (T9):	20	Professor (1):	13
Tenure Track (K9):	4	Associate Professor (2):	7
Full-Time Temporary (N9):	2	Assistant Professor (3):	4
Instructor Track (NI):	0	Master Instructor (7):	0
Coordinator Track (NK):	0	Senior Instructor (6):	0
Clinical/Professional Practice Track (NN):	0	Instructor (4):	0
Research Track (NR):	0	Lecturer (5):	2
Total Faculty:	26		

Faculty Name	Code	Code	Job Title	Number
Information Systems and Analytics				
Clark, Carol L	T9	1	Professor	114120
Clark, W Jeff	T9	1	Professor	114100
Gambill, Stanley E	T9	1	Professor	114040
Greer, Timothy H	T9	1	Chairperson	114005
Jih, Wen J	T9	1	Professor	114020
Korzaan, Melinda L	T9	1	Professor	114130
Morris, Steven A	T9	1	Professor	114110
Aggarwal, Rajesh	T9	2	Associate Professor	114170
Brooks, Stoney L	T9	2	Associate Professor	116330
Erskine, Michael A	T9	2	Associate Professor	114210
Seipel, Scott J	T9	2	Associate Professor	114240
Zaza, Ibtissam M	T9	2	Associate Professor	114080
Morissette, Elyssa R	K9	3	Assistant Professor	225010
Sengupta, Soham	K9	3	Assistant Professor	114070
Totty, Stephanie A	K9	3	Assistant Professor	114030
Zhu, Yaping	K9	3	Assistant Professor	111060
Billings, Sandra M	NI	4	Instructor	114140
Boyce, Lisa D	N9	5	Lecturer	114160
Lyle, Melanie G	N9	5	Lecturer	114220
Williamson, Erica C	N9	5	Lecturer	355030

Adjustments (Post Retiree, full reassignment, leave of absence, sick leave, etc.) - excluded from Total Faculty count:

Summary			
Tenured (T9):	12	Professor (1):	7
Tenure Track (K9):	4	Associate Professor (2):	5
Full-Time Temporary (N9):	3	Assistant Professor (3):	4
Instructor Track (NI):	1	Master Instructor (7):	0
Coordinator Track (NK):	0	Senior Instructor (6):	0
Clinical/Professional Practice Track (NN):	0	Instructor (4):	1
Research Track (NR):	0	Lecturer (5):	3
Total Faculty:	20		

Faculty Name	Code	Code	Job Title	Number
Management				
Clark, Leigh A	T9	1	Professor	111480
Foote, David A	T9	1	Professor	111160
Gilbert, Jacqueline A	T9	1	Professor	111340
Kethley, Robert B	T9	1	Professor	111300
Morrell, Daniel L	T9	1	Professor	111040
Mpoyi, Richard T	T9	1	Professor	111330
Mullane, John V	T9	1	Professor	111050
Raffo, Deana M	T9	1	Chairperson	111005
Sokoya, Sesan K	T9	1	Associate Dean, Graduate Programs	111210
Welborn, Cliff A	T9	1	Professor	111290
Yue, Jinfeng	T9	1	Professor	111170
Abston, Kristie A	T9	2	Associate Professor	112150
Moake, Timothy R	T9	2	Associate Professor	111280
Nelson, Millicent F	T9	2	Associate Professor	242010
Shanine, Kristen R	T9	2	Associate Professor	112090
Smith, Adam W	T9	2	Associate Professor	242020
Williams, Ralph I	T9	2	Associate Professor	111180
Bakare, Bukola S	K9	3	Assistant Professor	110310
Dalawella Gurukandage, Kanchana S	K9	3	Assistant Professor	111310
Manix, Kelly G	K9	3	Assistant Professor	130020
Tarpey, Richard J	K9	3	Assistant Professor	111260
Turner, Karynne	K9	3	Assistant Professor	111380
Wilson, Jean R	NK	7	Master Instructor	242050
Bast, James H	NK	4	Instructor	747010
Gupton, Dennis E	NI	4	Instructor	111110

Faculty Name	Code	Code	Job Title	Number
Management (cont.)				
Bozeman, Amelia K	N9	5	Lecturer	112100
Dillard, LaShonda R	N9	5	Lecturer	111030
McAnally, Emily J	N9	5	Lecturer	111270
Montgomery, Vickie L	N9	5	Lecturer	111360
Business and Economic Research Center				
Arik, Murat	T9	2	Director and Chairholder Jones Chair of Excellence in Urban and Regional Planning	201100
Wright Chair of Entrepreneurship				
Aaron, Joshua R	T9	1	Chairholder	112030
<i>Adjustments (Post Retiree, full reassignment, leave of absence, sick leave, etc.) - excluded from Total Faculty count:</i>				
Geho, Patrick R	T9	1	Executive Director - 12 month	G06110
Thomas, Roy E	T9	1	Professor	111030
Summary				
Tenured (T9):	19		Professor (1):	12
Tenure Track (K9):	5		Associate Professor (2):	7
Full-Time Temporary (N9):	4		Assistant Professor (3):	5
Instructor Track (NI):	1		Master Instructor (7):	1
Coordinator Track (NK):	2		Senior Instructor (6):	0
Clinical/Professional Practice Track (NN):	0		Instructor (4):	2
Research Track (NR):	0		Lecturer (5):	4
Total Faculty:	31			

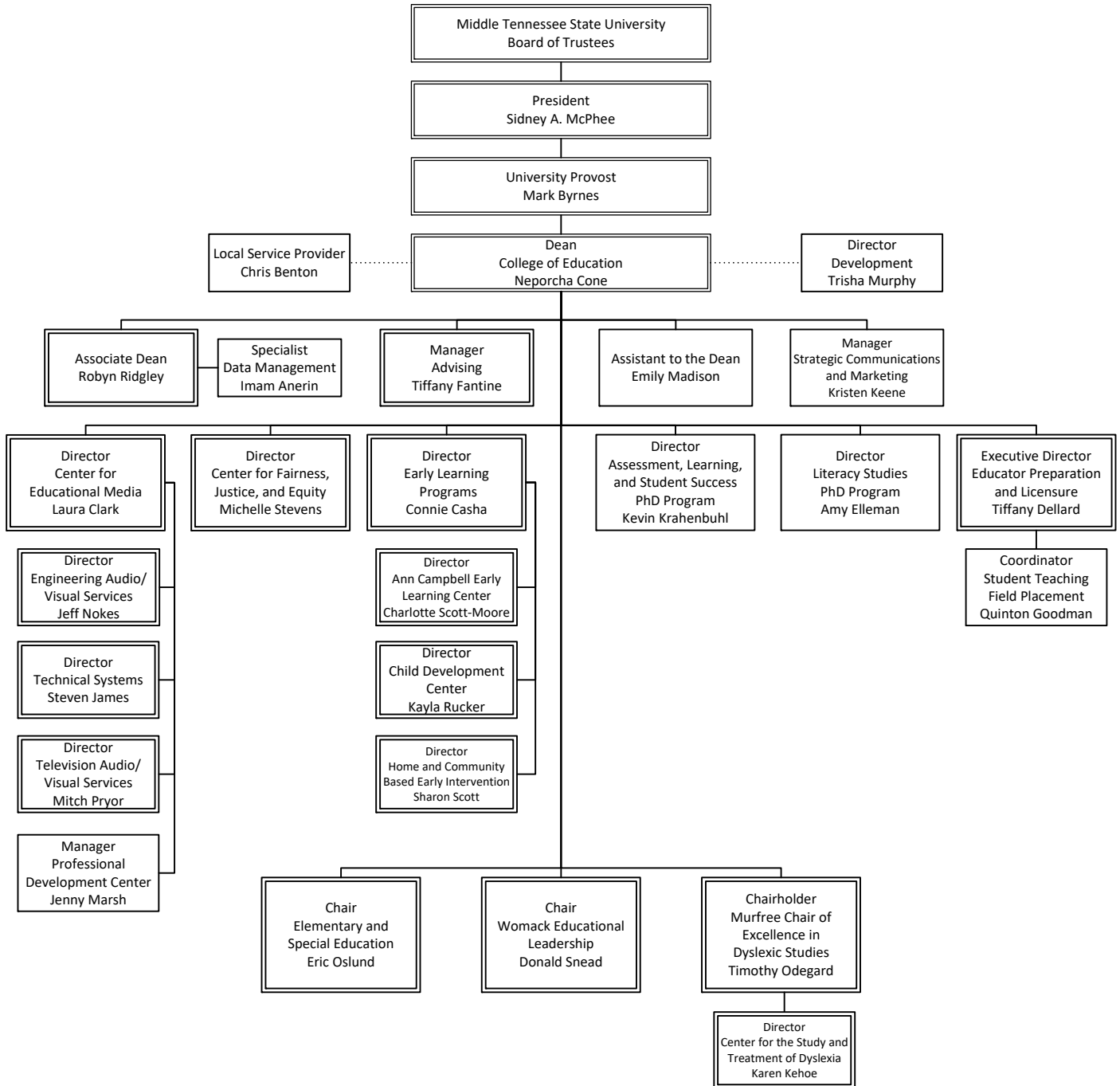
Faculty Name	Code	Code	Job Title	Number
Marketing				
Blair, Robert B	T9	1	Chairperson	112005
Coats, Thomas A	NN	1	Professor	111070
Edmondson, Diane R	T9	1	Professor	111470
Hemby-Grubb, Kathy V	T9	1	Professor	207010
Roy, Donald P	T9	1	Professor	112140
Srivastava, Rajesh V	T9	1	Professor	111420
Urban, David J	T9	1	Professor	111320
Clark, William R	T9	2	Associate Professor	111430
Henderson, Ronda G	T9	2	Associate Professor	112060
Kempf, DeAnna S	T9	2	Associate Professor	111020
Matthews, Lucy M	T9	2	Associate Professor	111120
Peasley, Michael C	T9	2	Associate Professor	111150
Phillips, Melodie R	T9	2	Associate Professor	111140
Roberts, Sherry J	T9	2	Associate Professor	112120
Ferguson, John R	K9	3	Assistant Professor	111090
Rancati, Gaia	K9	3	Assistant Professor	112070
Roberts, Mark E	NK	4	Instructor	207030
George, Kenneth H	N9	5	Lecturer	110200

Adjustments (Post Retiree, full reassignment, leave of absence, sick leave, etc.) - excluded from Total Faculty count:

Summary			
Tenured (T9):	13	Professor (1):	7
Tenure Track (K9):	2	Associate Professor (2):	7
Full-Time Temporary (N9):	1	Assistant Professor (3):	2
Instructor Track (NI):	0	Master Instructor (7):	0
Coordinator Track (NK):	1	Senior Instructor (6):	0
Clinical/Professional Practice Track (NN):	1	Instructor (4):	1
Research Track (NR):	0	Lecturer (5):	1
Total Faculty:	18		

This page intentionally left blank

**MIDDLE TENNESSEE STATE UNIVERSITY
COLLEGE OF EDUCATION
OCTOBER BUDGET 2024-2025**



COLLEGE OF EDUCATION

Dean, Neporcha Cone, Professor

Associate Dean, Robyn Ridgley, Professor

Assistant to the Dean, Emily Madison

Chairholder, Katherine Davis Murfree Chair of Excellence in Dyslexic Studies, Timothy Odegard, Professor

Executive Director, Professional Laboratory Experiences, Tiffany Dellard

Director, Ann Campbell Early Learning Center, Charlotte Scott-Moore

Director, Center for Educational Media, Laura Clark

Director, Center for Fairness, Justice, and Equity, Michelle Stevens, Professor

Director, Center for the Study and Treatment of Dyslexia, Karen Kehoe

Director, Child Development Center, Kayla Rucker

Director, Early Learning Programs, Connie Casha

Director, Ed.D. in Assessment, Learning and Student Success, Kevin Krahenbuhl, Professor

Director, Home and Community Based Early Intervention, Sharon Scott

Director, Ph.D. in Literacy Studies, Amy Elleman, Professor

Director, Development, Trisha Murphy

Director, Engineering, Audio/Visual Services, Jeffery Nokes

Director, Technical Services, Steven James

Director, Television, Audio/Visual Services, Mitch Pryor

Coordinator, Student Teaching Field Placement, Quinton Goodman

Local Service Provider, Chris Benton

Manager, Advising, Tiffany Fantine

Manager, Professional Development Center, Virginia Marsh

Manager, Strategic Communications and Marketing Manager, Kristen Keene

Specialist, Data Management, Imam Anerin

ACADEMIC DEPARTMENTS

Chairperson, Elementary and Special Education, Eric Oslund, Professor

Chairperson, Womack Educational Leadership, Donald Snead, Professor

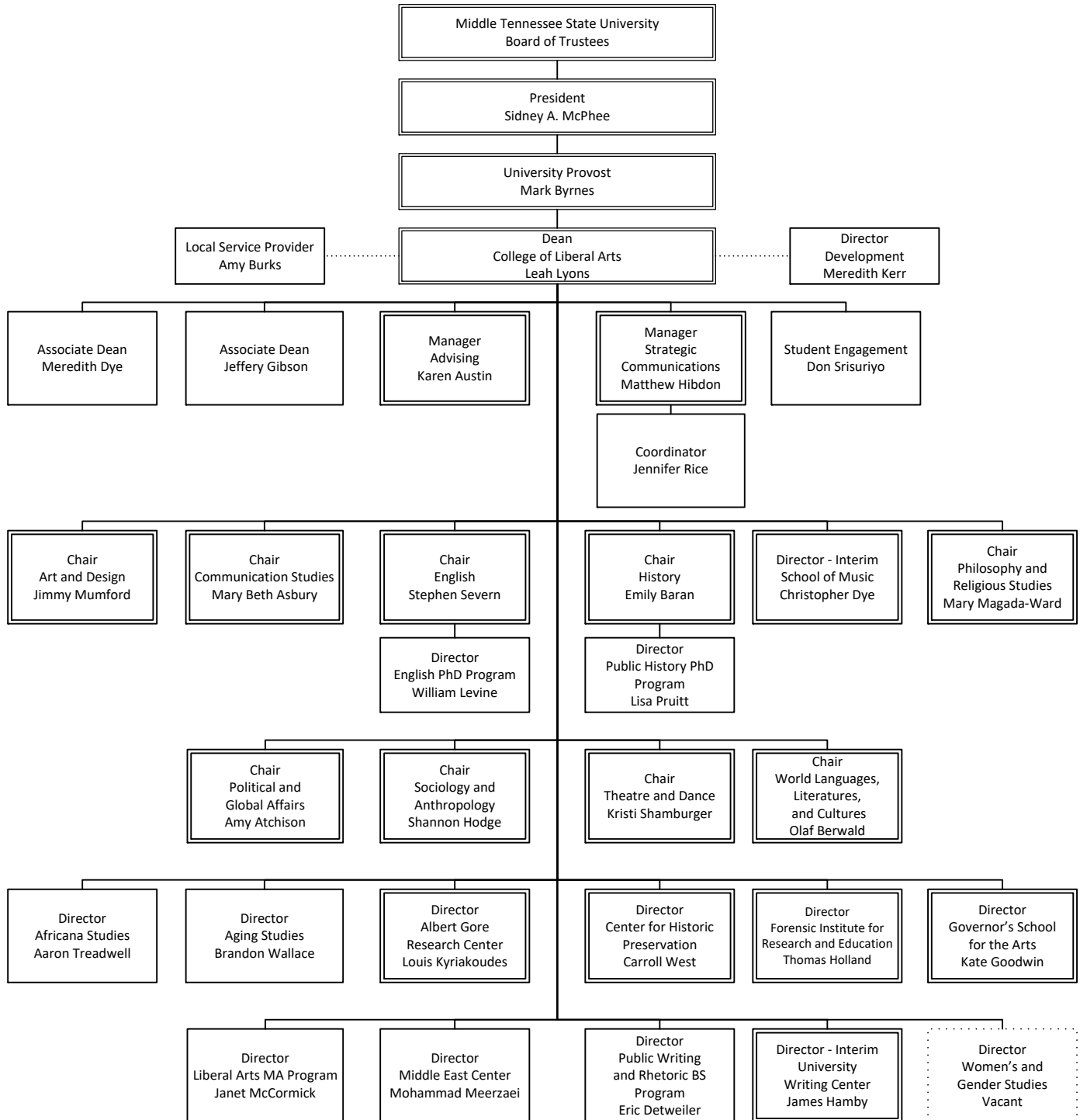
Faculty Name	Code	Code	Job Title	Number
Elementary and Special Education				
Boulware, Beverly J	T9	1	Professor	116290
Elleman, Amy M	T9	1	Professor	153010
Huddleston, Tracey R	T9	1	Professor	116190
Kramer Ertel, Pamela A	T9	1	Professor	119030
Lim, Seok J	T9	1	Professor	119290
Mangione, Katherine A	T9	1	Professor	116030
Oslund, Eric L	T9	1	Chairperson	116005
Winters, Jeremy	T9	1	Professor	116100
Harmon, Shannon E	T9	2	Associate Professor	116070
Hooser, Angela G	T9	2	Associate Professor	116260
Pence, Alicia R	T9	2	Associate Professor	116250
Schrodt, Katie M	T9	2	Associate Professor	116240
Barksdale, Bonnie A	K9	3	Assistant Professor	116280
Cao, Yucheng	K9	3	Assistant Professor	116050
Fields, Robin S	K9	3	Assistant Professor	116310
Lee, Sungyoon	K9	3	Assistant Professor	116020
McClain, Janna B	K9	3	Assistant Professor	115190
Moore, Danielle L	N9	5	Lecturer	116300

Adjustments (Post Retiree, full reassignment, leave of absence, sick leave, etc.) - excluded from Total Faculty count:

Summary			
Tenured (T9):	12	Professor (1):	8
Tenure Track (K9):	5	Associate Professor (2):	4
Full-Time Temporary (N9):	1	Assistant Professor (3):	5
Instructor Track (NI):	0	Master Instructor (7):	0
Coordinator Track (NK):	0	Senior Instructor (6):	0
Clinical/Professional Practice Track (NN):	0	Instructor (4):	0
Research Track (NR):	0	Lecturer (5):	1
Total Faculty:	18		

Faculty Name	Code	Code	Job Title	Number
Womack Educational Leadership				
Craig, Dorothy V	T9	1	Professor	115070
Goodin, Terry L	T9	1	Professor	115040
Krahenbuhl, Kevin S	T9	1	Professor	115050
Lee, Leslie R	T9	1	Professor	120520
Peyton, Marvin L	T9	1	Professor	115210
Snead, Donald	T9	1	Chairperson	115005
Young, Barbara N	T9	1	Professor	115230
Carter, John L	T9	2	Associate Professor	115270
Dillard, Heather K	T9	2	Associate Professor	115220
Hebert, Holly S	T9	2	Associate Professor	115160
Hover, Ashlee B	T9	2	Associate Professor	115060
Jenkins, Andrea J	K9	2	Associate Professor	120510
Jones, Ryan S	T9	2	Associate Professor	119220
Lambert, Frank P	T9	2	Associate Professor	116040
Singleton, Everett B	K9	2	Associate Professor	115080
Evert, Kimberly A	K9	3	Assistant Professor	115100
Godwin, Kimberly A	K9	3	Assistant Professor	119150
Rost, James K	K9	3	Assistant Professor	116270
Collette, Ann C	N9	5	Lecturer	115140
Feck, William B	N9	5	Lecturer	120070
Luck, DeAnne L	N9	5	Lecturer	121130
Center for Fairness, Justice, and Equity				
Stevens, Michelle C	T9	1	Director - 12 month	399010
<i>Adjustments (Post Retiree, full reassignment, leave of absence, sick leave, etc.) - excluded from Total Faculty count:</i>				
Stevens, Michelle C	T9	1	Director - 12 month	399010
Tenured (T9):	13		Professor (1):	7
Tenure Track (K9):	5		Associate Professor (2):	8
Full-Time Temporary (N9):	3		Assistant Professor (3):	3
Instructor Track (NI):	0		Master Instructor (7):	0
Coordinator Track (NK):	0		Senior Instructor (6):	0
Clinical/Professional Practice Track (NN):	0		Instructor (4):	0
Research Track (NR):	0		Lecturer (5):	3
Total Faculty:	21			

**MIDDLE TENNESSEE STATE UNIVERSITY
COLLEGE OF LIBERAL ARTS
OCTOBER BUDGET 2024-2025**



COLLEGE OF LIBERAL ARTS

Dean, Leah Lyons, Professor

Associate Dean, Meredith Dye, Professor

Associate Dean, Jeffery Gibson, Professor

Director, Africana Studies, Aaron Treadwell, Associate Professor

Director, Aging Studies, Brandon Wallace, Professor

Director, Albert Gore Research Center, Louis Kyriakoudes, Professor

Director, Center for Historic Preservation, Carroll West, Professor

Director, Development, Meredith Kerr

Director, Forensic Institute for Research and Education, Thomas Holland, Professor

Director, Governor's School for the Arts, Kate Goodwin, Professor

Director, Master of Arts Liberal Arts, Janet McCormick, Professor

Director, Middle East Center, Mohammad Meerzaei, Assistant Professor

Director, Public History PhD Program, Lisa Pruitt, Professor

Director, English PhD Program, William Levine, Professor

Director, Public Writing and Rhetoric, Eric Detweiler, Associate Professor

Director, University Writing Center, Interim, James Hamby

Director, Women's and Gender Studies Program, Vacant

Coordinator, Jennifer Rice

Coordinator, Student Engagement, Don Srisuriyo

Local Service Provider, Amy Burks

Manager, Advising Karen Austin

Manager, Strategic Communications, Matthew Hibdon

ACADEMIC DEPARTMENTS

Chairperson, Art and Design, Jimmy Mumford, Professor

Chairperson, Communication Studies, Mary Beth Asbury, Professor

Chairperson, English, Stephen Severn, Professor

Chairperson, History, Emily Baran, Professor

Director, School of Music, Interim, Christopher Dye, Associate Professor

Chairperson, Philosophy and Religious Studies, Mary Magada-Ward, Professor

Chairperson, Political and Global Affairs, Amy Atchison, Professor

Chairperson, Sociology and Anthropology, Shannon Hodge, Professor

Chairperson, Theatre and Dance, Kristi Shamburger, Associate Professor

Chairperson, World Languages, Literatures, and Cultures, Olaf Berwald, Professor

Faculty Name	Code	Code	Job Title	Number
Art and Design				
Anfinson, Erin K	T9	1	Professor	122230
Houghton, Sisavanh	T9	1	Professor	122160
Kelker, Nancy L	T9	1	Professor	122210
Mumford, Jimmy	T9	1	Chairperson	122005
Sickler Voigt, Debrah C	T9	1	Professor	122150
Baggarly, Michael D	T9	2	Associate Professor	122020
Cochrane, Laura E	T9	2	Associate Professor	122220
Dabbs, Douglas C	T9	2	Associate Professor	122080
Dummons, Kimberly D	T9	2	Associate Professor	122270
Lorson, Noel D	T9	2	Associate Professor	122060
McLeod, Mark G	K9	2	Associate Professor	122030
Nagy, Jean M	T9	2	Associate Professor	122100
O'Connell, Kathleen A	T9	2	Associate Professor	122090
Satinover, Nicholas H	T9	2	Associate Professor	122110
Selph, Sheri F	T9	2	Associate Professor	122140
Duncan, Kelsey W	K9	3	Assistant Professor	122170
Kinder, Katie M	K9	3	Assistant Professor	122040
Rodriguez, Antony A	K9	3	Assistant Professor	122250
Strickland, Holly A	K9	3	Assistant Professor	415080

Faculty Name	Code	Code	Job Title	Number
Art and Design (cont)				
Houghton, Jarrod J	NI	6	Senior Instructor	122240
Medlock, Paige M	NI	4	Instructor	122010
Newman, Melissa J	NI	4	Instructor	122130
Stoneman, Kyle D	NI	4	Instructor	122290
Gagliardi, Jennifer C	N9	5	Lecturer	122070
Lynn, Joshua E	N9	5	Lecturer	122280
Prince, Ambrose	N9	5	Lecturer	111100
Simkin, Stephanie D	N9	5	Lecturer	122300
Wells, Jake L	N9	5	Lecturer	124020

Adjustments (Post Retiree, full reassignment, leave of absence, sick leave, etc.) - excluded from Total Faculty count:

Summary			
Tenured (T9):	14	Professor (1):	5
Tenure Track (K9):	5	Associate Professor (2):	10
Full-Time Temporary (N9):	5	Assistant Professor (3):	4
Instructor Track (NI):	4	Master Instructor (7):	0
Coordinator Track (NK):	0	Senior Instructor (6):	1
Clinical/Professional Practice Track (NN):	0	Instructor (4):	3
Research Track (NR):	0	Lecturer (5):	5
Total Faculty:	28		

Faculty Name	Code	Code	Job Title	Number
Communication Studies				
Asbury, Mary E	T9	1	Chairperson	631005
Kim, Yang S	T9	1	Professor	130040
McCormick, Janet K	T9	1	Professor	130050
Shi, Xiaowei	T9	1	Professor	130030
Chevrette, Roberta J	T9	2	Associate Professor	130080
Dix, Andrew C	T9	2	Associate Professor	130370
Hoskins, Natalie S	T9	2	Associate Professor	130310
Priddis, DeAnne M	T9	2	Associate Professor	130380
Richey, Patrick G	T9	2	Associate Professor	107530
Kissinger, Lori A	NI	7	Master Instructor	130340
Listach, Natonya D	NI	7	Master Instructor	130220
Gruber, Katie G	NI	4	Instructor	130390
Stephens, Elizabeth	NI	4	Instructor	130190
Stephens, L'Oreal J	NI	4	Instructor	121100

Faculty Name	Code	Code	Job Title	Number
Communication Studies (cont.)				
Boyd, Debra S	N9	5	Lecturer	130150
Bruder, Kurt A	N9	5	Lecturer	415040
Burnett, Jeri L	N9	5	Lecturer	143010
Cinefro-Prelis, Dominick A	N9	5	Lecturer	130240
Durr, Laura K	N9	5	Lecturer	130430
Hill, Mary E	N9	5	Lecturer	130130
Laferty, Crystal A	N9	5	Lecturer	130090
Lukawitz, Jason J	N9	5	Lecturer	130360
Naylor, Kristin C	N9	5	Lecturer	130320
Richey, Rebecca J	N9	5	Lecturer	123235
Vincent, Pierre L	N9	5	Lecturer	130440

Adjustments (Post Retiree, full reassignment, leave of absence, sick leave, etc.) - excluded from Total Faculty count:

Summary			
Tenured (T9):	9	Professor (1):	4
Tenure Track (K9):	0	Associate Professor (2):	5
Full-Time Temporary (N9):	11	Assistant Professor (3):	0
Instructor Track (NI):	5	Master Instructor (7):	2
Coordinator Track (NK):	0	Senior Instructor (6):	0
Clinical/Professional Practice Track (NN):	0	Instructor (4):	3
Research Track (NR):	0	Lecturer (5):	11
Total Faculty:	25		

Faculty Name	Code	Code	Job Title	Number
English				
Albakry, Mohammed A	T9	1	Professor	123075
Barnett, Claudia	T9	1	Professor	123270
Blackwell, Aleka A	T9	1	Professor	123040
Brantley, William O	T9	1	Professor	123430
Brewer, Gaylord	T9	1	Professor	123440
Dubek, Laura J	T9	1	Professor	123160
Gaitely, Patricia M	T9	1	Professor	123145
Hollings, Marion D	T9	1	Professor	123090
Jackson, Mark A	T9	1	Professor	123085
Kates, Ronald E	T9	1	Professor	123610
Kostkowska, Justyna	T9	1	Professor	123470
Levine, William S	T9	1	Professor	123560
Lutz, Alfred	T9	1	Professor	123070
McCluskey, Peter M	T9	1	Professor	123660
Myatt, Julie A	T9	1	Professor	123185
Neth, Michael J	T9	1	Professor	123050
Pantelides, Kate L	T9	1	Professor	123205
Renfroe, Alicia M	T9	1	Professor	123105
Severn, Stephen E	T9	1	Chairperson	123005
Therrien, Kathleen M	T9	1	Professor	123390
White, Laura A	T9	1	Professor	123690
Arroyo, Fred	T9	2	Associate Professor	136120
Bhadury, Poushali	T9	2	Associate Professor	123055
Detweiler, Eric S	T9	2	Associate Professor	123020
Marchant, Jennifer E	T9	2	Associate Professor	123065
Weedman, Christopher J	T9	2	Associate Professor	123140
Branum Thrash, Caitlin J	K9	3	Assistant Professor	123400
Donnelly, Bridget C	K9	3	Assistant Professor	123370
Swenson, Amanda L	K9	3	Assistant Professor	123330
West, Sara E	K9	3	Assistant Professor	123410
Henderson, Frances D	NI	7	Master Instructor	111010
Kates, Jennifer W	NI	7	Master Instructor	123285
Moonshower, Candace B	NI	7	Master Instructor	123150
Tormey, Warren	NI	7	Master Instructor	123540
McInturff, Adam L	NI	6	Senior Instructor	123590

Faculty Name	Code	Code	Job Title	Number
English (cont.)				
Burleson, Matthew C	NI	4	Instructor	123120
Denson, Honey S	NI	4	Instructor	712020
Fant, Amy B	NI	4	Instructor	123175
Harris-Aber, Amy A	NI	4	Instructor	123600
Hennessy, Leanne G	NI	4	Instructor	123265
Lawrence, Robert L	NI	4	Instructor	123340
Lynn, Alyson M	NI	4	Instructor	123045
McCain, Cindy L	NI	4	Instructor	712030
Shapiro, Aaron H	NI	4	Instructor	123130
Wilson, Jennifer B	NI	4	Instructor	126330
Albro, Lena K	N9	5	Lecturer	123135
Bradley, Brooke A	N9	5	Lecturer	123530
Brown, Matthew L	N9	5	Lecturer	123490
Carpenter, Eric D	N9	5	Lecturer	123320
Castelo, Ethan D	N9	5	Lecturer	123550
Cruse, Joseph M	N9	5	Lecturer	712080
Dudak, Brian E	N9	5	Lecturer	129040
Hall, Ailey G	N9	5	Lecturer	123420
Hall, Douglas M	N9	5	Lecturer	712050
Hernandez, Jonathan T	N9	5	Lecturer	123580
Hudson, Brett A	N9	5	Lecturer	123035
Hughes, Eric W	N9	5	Lecturer	123155
Hutcheson, Cory T	N9	5	Lecturer	123190
Jiang, Yaqian	N9	5	Lecturer	123095
Knox, Alvin E	N9	5	Lecturer	123030
Lam, Collin D	N9	5	Lecturer	123570
Lee, Lori Y	N9	5	Lecturer	123025
Leason, Mary C	N9	5	Lecturer	123225
Licciardi, Bryanna N	N9	5	Lecturer	123195
Mackin, Randal T	N9	5	Lecturer	123210
Massengill, Haylee E	N9	5	Lecturer	123110
Matthews, Cody J	N9	5	Lecturer	355130
Melton, Laura K	N9	5	Lecturer	712090
Mitchell, Joseph L	N9	5	Lecturer	123520
Parker, Heather D	N9	5	Lecturer	136340
Porch, Mallory A	N9	5	Lecturer	105280
Ragan, Shelby L	N9	5	Lecturer	123015
Reed, Ryan E	N9	5	Lecturer	123060
Reynolds, Clarence E	N9	5	Lecturer	712060
Tyner, Thomas R	N9	5	Lecturer	123125

Faculty Name	Code	Code	Job Title	Number
--------------	------	------	-----------	--------

English (cont.)

Adjustments (Post Retiree, full reassignment, leave of absence, sick leave, etc.) - excluded from Total Faculty count:

Severn, Stephen E	T9	1	Chairperson	123005
Helford, Elyce R	T9	1	Professor	123450
Sherman, Theodore J	T9	1	Professor	123230

Summary

Tenured (T9):	25	Professor (1):	20
Tenure Track (K9):	4	Associate Professor (2):	5
Full-Time Temporary (N9):	30	Assistant Professor (3):	4
Instructor Track (NI):	15	Master Instructor (7):	4
Coordinator Track (NK):	0	Senior Instructor (6):	1
Clinical/Professional Practice Track (NN):	0	Instructor (4):	10
Research Track (NR):	0	Lecturer (5):	30

Total Faculty: 74

Faculty Name	Code	Code	Job Title	Number
History				
Baran, Emily B	T9	1	Chairperson	126005
Chao, Yuan L	T9	1	Professor	126250
Doyle, Mark E	T9	1	Professor	126150
Duchacek, Suzanne S	T9	1	Professor	126220
Foley, Sean E	T9	1	Professor	126090
Ly, Aliou	T9	1	Professor	126140
McCusker, Kristine M	T9	1	Professor	126290
McIntyre, Rebecca C	NR	1	Professor	126460
Nelson, Lynn A	T9	1	Professor	126350
Norkunas, Martha K	T9	1	Professor	126230
Polk, Andrew R	T9	1	Professor	126170
Pruitt, Lisa J	T9	1	Professor	126130
Riley Sousa, Mary A	T9	1	Professor	126120
Rosenmuller, Christoph	T9	1	Professor	126060
Sayward, Amy L	T9	1	Professor	126010
Woods, Louis L	T9	1	Professor	126480
Bakari, Adonijah L	T9	2	Associate Professor	126320
Fialka, Andrew W	T9	2	Associate Professor	401085
Kolar, Kelly A	T9	2	Associate Professor	126110
Sikes, Kathryn L	T9	2	Associate Professor	126340
Treadwell, Aaron M	T9	2	Associate Professor	126530
Dube, Pankhuree R	K9	3	Assistant Professor	126020
Valanzola, Ashley L	K9	3	Assistant Professor	126160
Frisby, Derek W	NK	7	Master Instructor	126440
Paulauskas, Michael V	NI	7	Master Instructor	126430
Turner, Mary J	NI	7	Master Instructor	411170
Holley, Brady L	NI	4	Instructor	126370
Pettit, Jennifer L	NI	4	Instructor	169010
Swart, Lisa A	NI	4	Instructor	126080

Faculty Name	Code	Code	Job Title	Number
History (cont)				
Alexander, Jordan O	N9	5	Lecturer	110090
Coventry, Fred R	N9	5	Lecturer	121180
Dowell, Cyrana B	N9	5	Lecturer	126210
Fletcher, Michael J	N9	5	Lecturer	126240
Holton, James V	N9	5	Lecturer	109200
Hunt, Lindsey M	N9	5	Lecturer	355140
Justice, David A	N9	5	Lecturer	240010
Mulhearn, Doris A	N9	5	Lecturer	111490
Rey, Josue	N9	5	Lecturer	126540
Roseberry, Jessica J	N9	5	Lecturer	123295
Truxal, Luke W	N9	5	Lecturer	126360

Center for Historic Preservation

West, Carroll V	T9	1	Director - 12 month	004050
Graham, Stacey R	NR	2	Associate Professor - 12 month	B82010

Gore Research Center

Kyriakoudes, Louis M	T9	1	Director - 12 month	014040
----------------------	----	---	---------------------	--------

Adjustments (Post Retiree, full reassignment, leave of absence, sick leave, etc.) - excluded from Total Faculty count:

Kyriakoudes, Louis M	T9	1	Director - 12 month	014040
Martin, Christopher B	T9	1	Professor	126270
West, Carroll V	T9	1	Director - 12 month	004050
Sawyer, Benjamin W	NI	7	Master Instructor	126490

Summary

Tenured (T9):	20	Professor (1):	16
Tenure Track (K9):	2	Associate Professor (2):	6
Full-Time Temporary (N9):	11	Assistant Professor (3):	2
Instructor Track (NI):	5	Master Instructor (7):	3
Coordinator Track (NK):	1	Senior Instructor (6):	0
Clinical/Professional Practice Track (NN):	0	Instructor (4):	3
Research Track (NR):	2	Lecturer (5):	11

Total Faculty: 41

Faculty Name	Code	Code	Job Title	Number
Music				
Aliquo, Don J	T9	1	Professor	131360
Arndt, Michael J	T9	1	Professor	131190
Bundage, Raphael B	T9	1	Professor	131110
Clark, Adam L	T9	1	Professor	131410
Cornish, Craig S	T9	1	Professor - 11 month	131310
Davila, Gerardo	T9	1	Professor	131130
Dawson, Andrea L	T9	1	Professor	131060
DeBoer, Angela R	T9	1	Professor	131090
Dent, Cedric C	T9	1	Professor	131450
Linton, Michael R	T9	1	Professor	131290
Little, Deanna R	T9	1	Professor	131220
Loucky, David L	T9	1	Professor	131140
McWhirter, Jamila L	T9	1	Professor	131230
Morgan, Joseph E	T9	1	Professor	131040
Nadgir, Arunesh N	T9	1	Professor	131070
Simmons, James R	T9	1	Professor	131050
Smith, H Stephen	T9	1	Professor	131120
Thomas, Raymond D	T9	1	Professor - 11 month	131320
Vannatta-Hall, Jennifer E	T9	1	Professor	225040
Waldecker, Todd H	T9	1	Professor	131030
West Osterfield, Paul D	T9	1	Professor	131020
Yelverton, William E	T9	1	Professor	131200
Cancryn, Dina S	T9	2	Associate Professor	131210
Combest, Christopher C	T9	2	Associate Professor	131080
Dye, Christopher K	T9	2	Director - Interim	131005
Nies, Carol R	T9	2	Associate Professor	131380
Bedford, Joshua L	K9	3	Assistant Professor	131260
Hayslett, Bryan	K9	3	Assistant Professor	131300
Perkins, William A	K9	3	Assistant Professor	131180

Faculty Name	Code	Code	Job Title	Number
Music (cont.)				
Tipps, Angela R	NK	7	Master Instructor	131420
Ko, Eun-Byol	NI	6	Senior Instructor	131440
Mueller, Brian S	NI	4	Instructor	121010
Hawkins, Dennis A	N9	5	Lecturer - 11 month	131280
Sorrels, Keith W	N9	5	Lecturer	131150
Spring, Staci A	N9	5	Lecturer	131100
Center for Chinese Music and Culture				
Han, Mei	T9	1	Director - 12 month	115120
Center for Popular Music				
Reish, Gregory N	T9	1	Director - 12 month	006110

Adjustments (Post Retiree, full reassignment, leave of absence, sick leave, etc.) - excluded from Total Faculty count:

Han, Mei	T9	1	Director - 12 month	115120
----------	----	---	---------------------	--------

Tenured (T9):	27	Professor (1):	23
Tenure Track (K9):	3	Associate Professor (2):	4
Full-Time Temporary (N9):	3	Assistant Professor (3):	3
Instructor Track (NI):	2	Master Instructor (7):	1
Coordinator Track (NK):	1	Senior Instructor (6):	1
Clinical/Professional Practice Track (NN):	0	Instructor (4):	1
Research Track (NR):	0	Lecturer (5):	3
Total Faculty:	36		

Faculty Name	Code	Code	Job Title	Number
Philosophy and Religious Studies				
Bombardi, Ronald J	T9	1	Professor	127010
Gray-Hildenbrand, Jenna D	T9	1	Professor	123315
Johnson, Clarence S	T9	1	Professor	127080
King, Rebecca	T9	1	Professor	145260
Magada-Ward, Mary F	T9	1	Chairperson	127005
Oliver, James P	T9	2	Associate Professor	127060
Purcell, Jack A	T9	2	Associate Professor	127050
Meerzaei, Mohammad	K9	3	Assistant Professor	127100
Slack, Gregory	K9	3	Assistant Professor	127070

Adjustments (Post Retiree, full reassignment, leave of absence, sick leave, etc.) - excluded from Total Faculty count:

Summary			
Tenured (T9):	7	Professor (1):	5
Tenure Track (K9):	2	Associate Professor (2):	2
Full-Time Temporary (N9):	0	Assistant Professor (3):	2
Instructor Track (NI):	0	Master Instructor (7):	0
Coordinator Track (NK):	0	Senior Instructor (6):	0
Clinical/Professional Practice Track (NN):	0	Instructor (4):	0
Research Track (NR):	0	Lecturer (5):	0
Total Faculty:	9		

Faculty Name	Code	Code	Job Title	Number
Political and Global Affairs				
Atchison, Amy L	T9	1	Chairperson	128005
DiCicco, Jonathan M	T9	1	Professor	128160
Federici, Michael P	T9	1	Professor	128060
Franklin, Sekou M	T9	1	Professor	128170
Korobkov, Andrei V	T9	1	Professor	128080
Koti, Francis T	T9	1	Professor	128010
Livingston, Steven G	T9	1	Professor	128140
Maynor, John W	T9	1	Professor	128180
Syler, James K	NN	1	Professor	123335
Tesi, Moses K	T9	1	Professor	128110
Wang, Zhen	T9	1	Professor	124320
Carleton, David E	T9	2	Associate Professor	128200
Chaney, James P	T9	2	Associate Professor	125170
Devadoss, Christabel A	T9	2	Associate Professor	125100
Langenbach, Lisa G	T9	2	Associate Professor	128070
McDaniel, Robb A	T9	2	Associate Professor	128020
Trowbridge, David L	T9	2	Associate Professor	128050
Woodward, Jennifer R	T9	2	Associate Professor	128120
Perkins, Corey L	N9	5	Lecturer	126470
Robertson, Stephen L	N9	5	Lecturer	130460
<i>Adjustments (Post Retiree, full reassignment, leave of absence, sick leave, etc.) - excluded from Total Faculty count:</i>				
Huber, Keith M	NN	1	Professor	405010
Summary				
Tenured (T9):	17		Professor (1):	11
Tenure Track (K9):	0		Associate Professor (2):	7
Full-Time Temporary (N9):	2		Assistant Professor (3):	0
Instructor Track (NI):	0		Master Instructor (7):	0
Coordinator Track (NK):	0		Senior Instructor (6):	0
Clinical/Professional Practice Track (NN):	1		Instructor (4):	0
Research Track (NR):	0		Lecturer (5):	2
Total Faculty:	20			

Faculty Name	Code	Code	Job Title	Number
Sociology and Anthropology				
Breault, Kevin D	T9	1	Professor	129180
Hodge, Shannon C	T9	1	Chairperson	129005
MacLean, Vicky M	T9	1	Professor	129010
Mertig, Angela G	T9	1	Professor	129260
Pace, Richard B	T9	1	Professor	129150
Smith, Kevin E	T9	1	Professor	129230
Wallace, J Brandon	T9	1	Professor	129250
Webber, Gretchen R	T9	1	Professor	129070
Wyatt, Andrew R	T9	1	Professor	129310
Eubanks, Paul N	T9	2	Associate Professor	129290
Leggett, Ida F	T9	2	Associate Professor	129060
Leggett, William H	T9	2	Associate Professor	129200
McKinzie, Ashleigh E	T9	2	Associate Professor	129050
Orak, Ugur	T9	2	Associate Professor	129240
Young, Rachel E	K9	3	Assistant Professor	129220
Hutson, Christina E	N9	5	Lecturer	129080
Márquez, Sherri A	N9	5	Lecturer	129300
Solomon, Jordan R	N9	5	Lecturer	129100

Forensic Institute for Research and Education

Holland, Thomas D	NR	1	Director - 12 month	110030
-------------------	----	---	---------------------	--------

Adjustments (Post Retiree, full reassignment, leave of absence, sick leave, etc.) - excluded from Total Faculty count:

Holland, Thomas D	NR	1	Director - 12 month	110030
-------------------	----	---	---------------------	--------

Summary

Tenured (T9):	14	Professor (1):	9
Tenure Track (K9):	1	Associate Professor (2):	5
Full-Time Temporary (N9):	3	Assistant Professor (3):	1
Instructor Track (NI):	0	Master Instructor (7):	0
Coordinator Track (NK):	0	Senior Instructor (6):	0
Clinical/Professional Practice Track (NN):	0	Instructor (4):	0
Research Track (NR):	0	Lecturer (5):	3

Total Faculty: 18

Faculty Name	Code	Code	Job Title	Number
Theatre and Dance				
Boyd, Scott J	T9	1	Professor	130210
Kennedy, Kyle D	T9	1	Professor	130070
Levin, Darren E	T9	1	Professor	130140
Macon, Tommy E	T9	1	Professor	130330
Goodwin, Katie J	T9	2	Associate Professor	130100
Shamburger, Kristi C	T9	2	Chairperson	130005
Ahn, Jee E	K9	3	Assistant Professor	130290
Fuss, Alicia L	K9	3	Assistant Professor	130200
Shouse, Jennifer L	K9	3	Assistant Professor	130060
Treadwell, Jade A	K9	3	Assistant Professor	126560
Clark, Patricia L	NK	4	Instructor	130410
Holt, Kimberly M	NK	4	Instructor	130400
McElheney, John S	NK	4	Instructor	136140
O'Donnell, Kevin P	NK	4	Instructor	123290
Wilkerson, David P	NI	4	Instructor	126310
Howell, Monté J	N9	5	Lecturer	107540
Heiner, Catherine A	N9	5	Lecturer	130160
Winer, Alexandra R	N9	5	Lecturer	210050

Adjustments (Post Retiree, full reassignment, leave of absence, sick leave, etc.) - excluded from Total Faculty count:

Summary			
Tenured (T9):	6	Professor (1):	4
Tenure Track (K9):	4	Associate Professor (2):	2
Full-Time Temporary (N9):	3	Assistant Professor (3):	4
Instructor Track (NI):	1	Master Instructor (7):	0
Coordinator Track (NK):	4	Senior Instructor (6):	0
Clinical/Professional Practice Track (NN):	0	Instructor (4):	5
Research Track (NR):	0	Lecturer (5):	3
Total Faculty:	18		

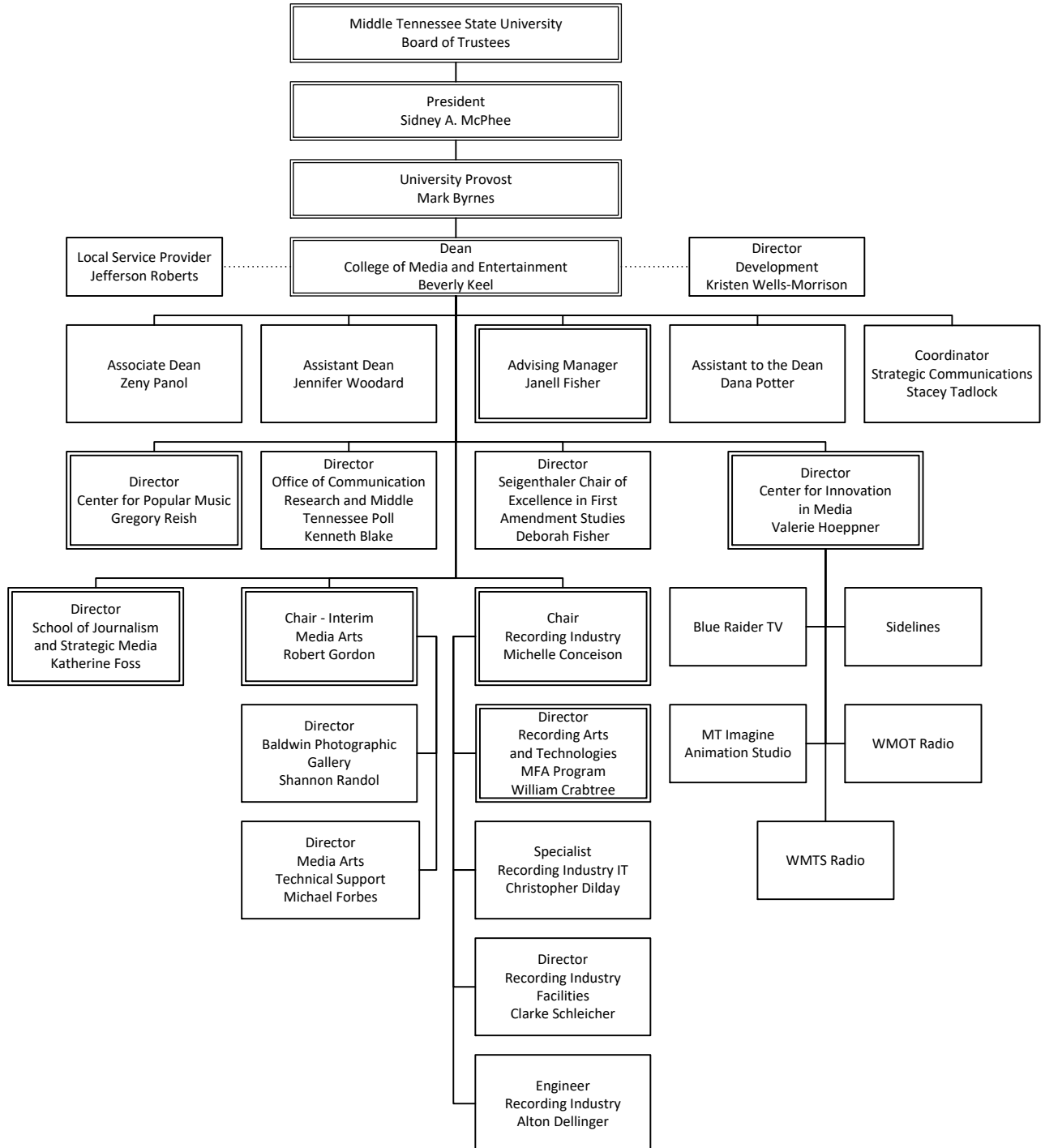
Faculty Name	Code	Code	Job Title	Number
World Languages, Literatures, and Cultures				
Ananth, Priya	T9	1	Professor	124270
Berwald, Olaf	T9	1	Chairperson	124005
Da, Jun	T9	1	Professor	124180
Diaz, Oscar A	T9	1	Professor	124010
McRae Kleinlein, Joan E	T9	1	Professor	124210
Morris, Richard E	T9	1	Professor	124160
Nogueira, Soraya C	T9	1	Professor	124140
Novella, Nuria M	T9	1	Professor	124120
McBreen, Theresa M	T9	2	Associate Professor	124190
McCullough, Ann M	T9	2	Associate Professor	124060
Neely, Kari S	T9	2	Associate Professor	124280
Pettigrew, Jason L	T9	2	Associate Professor	124090
Rice, Michael H	T9	2	Associate Professor	124040
Trindade Prestes, Luciana D	T9	2	Associate Professor	124260
Gonzalez Vela, Gema	K9	3	Assistant Professor	124050
Matsuo, Ayaka	K9	3	Assistant Professor	124220
Volpe Rinonapoli, Paolo	NI	7	Master Instructor	124250
Shima, Chiaki	NI	4	Instructor	123325
Ambruster, Watson	N9	5	Lecturer	124170
Poarch, Ryoko	N9	5	Lecturer	122050

Adjustments (Post Retiree, full reassignment, leave of absence, sick leave, etc.) - excluded from Total Faculty count:

Summary			
Tenured (T9):	14	Professor (1):	8
Tenure Track (K9):	2	Associate Professor (2):	6
Full-Time Temporary (N9):	2	Assistant Professor (3):	2
Instructor Track (NI):	2	Master Instructor (7):	1
Coordinator Track (NK):	0	Senior Instructor (6):	0
Clinical/Professional Practice Track (NN):	0	Instructor (4):	1
Research Track (NR):	0	Lecturer (5):	2
Total Faculty:	20		

This page intentionally left blank

**MIDDLE TENNESSEE STATE UNIVERSITY
COLLEGE OF MEDIA AND ENTERTAINMENT
OCTOBER BUDGET 2024-2025**



COLLEGE OF MEDIA AND ENTERTAINMENT

Dean, Beverly Keel, Professor

Associate Dean, Zeny Panol, Professor

Assistant Dean, Jennifer Woodard, Professor

Assistant to the Dean, Dana Potter

Director, Baldwin Photographic Gallery, Shannon Randol, Associate Professor

Director, Center for Innovation in Media, Valerie Hoepner

Director, Center for Popular Music, Gregory Reish, Professor

Director, Development, Kristin Wells-Morrison

Director, John Seigenthaler Chair of Excellence in First Amendment Studies, Deborah Fisher

Director, Media Arts Technical Support, Michael Forbes

Director, Office of Communication Research and Middle Tennessee Poll, Kenneth Blake, Professor

Director, Recording Industry Facilities, Clarke Schleicher

Director, Recording Industry and Technologies MFA Program, William Crabtree

Engineer, Recording Industry, Alton Dellinger

Local Service Provider, Jefferson Roberts

Manager, Advising, Janell Fisher

Specialist, Recording Industry IT, Christopher Dilday

ACADEMIC DEPARTMENTS

Director, School of Journalism and Strategic Media, Katherine Foss, Professor

Chairperson, Media Arts, Interim, Robert Gordon, Associate Professor

Chairperson, Recording Industry, Michelle Conceison, Associate Professor

Faculty Name	Code	Code	Job Title	Number
Journalism and Strategic Media				
Asthana, Sanjay	T9	1	Professor	143050
Blake, Kenneth R	T9	1	Professor	143130
Burriss, Larry L	T9	1	Professor	143040
Foss, Katherine A	T9	1	Director	143005
Haines, Leslie G	T9	1	Professor	143180
Loubere, Philip A	T9	1	Professor	143070
Pitts, Gregory G	T9	1	Professor	143230
Woodard, Jennifer B	T9	1	Professor	144230
Bacon, Chris A	T9	2	Associate Professor	144010
Cruikshank, Sally A	T9	2	Associate Professor	143160
Eschenfelder, Christine C	T9	2	Associate Professor	143030
Farwell, Tricia M	T9	2	Associate Professor	143320
Reineke, Jason B	T9	2	Associate Professor	143100
Taylor, Matthew P	T9	2	Associate Professor	143290
Hall, Andrea E	K9	3	Assistant Professor	143140
Leimkuehler, Matthew C	K9	3	Assistant Professor	143270
Zhang, Jun	K9	3	Assistant Professor	143360
Eschenfelder, Daniel J	NI	4	Instructor	143400
Boyd-Chambers, Angela G	N9	5	Lecturer	143260
Holman, Robert L	N9	5	Lecturer	143060
Myles, Mytecia R	N9	5	Lecturer	143090

Adjustments (Post Retiree, full reassignment, leave of absence, sick leave, etc.) - excluded from Total Faculty count:

Summary			
Tenured (T9):	14	Professor (1):	8
Tenure Track (K9):	3	Associate Professor (2):	6
Full-Time Temporary (N9):	3	Assistant Professor (3):	3
Instructor Track (NI):	1	Master Instructor (7):	0
Coordinator Track (NK):	0	Senior Instructor (6):	0
Clinical/Professional Practice Track (NN):	0	Instructor (4):	1
Research Track (NR):	0	Lecturer (5):	3
Total Faculty:	21		

Faculty Name	Code	Code	Job Title	Number
Media Arts				
Barnas, Marie M	T9	1	Professor	107050
Heinrich, Roger W	T9	1	Professor	144140
Borklund, Stephanie E	K9	2	Associate Professor	156170
Bowen, Edward N	T9	2	Associate Professor	144020
Chilsen, Paul J	T9	2	Associate Professor	144030
Gomez, Rodrigo	T9	2	Associate Professor	121170
Gordon, Robert D	T9	2	Chairperson - Interim	144005
Hollyfield, Jerod R	K9	2	Associate Professor	144040
Lewis, Richard W	T9	2	Associate Professor	144160
McNulty, Kevin J	T9	2	Associate Professor	143190
Neff, Thomas L	T9	2	Associate Professor	144070
O'Neill, Todd	T9	2	Associate Professor	144130
Randol, Shannon M	T9	2	Associate Professor	144050
Sultan, Alison L	T9	2	Associate Professor	144150
Trundle, Jonathan C	T9	2	Associate Professor	144060
Conkwright, Katherine W	K9	3	Assistant Professor	144200
Griswold, Paul C	K9	3	Assistant Professor	144100
Kaczmarek, Michael A	K9	3	Assistant Professor	105310
Potter, Kristine E	K9	3	Assistant Professor	144240

Faculty Name	Code	Code	Job Title	Number
Media Arts (cont)				
Fox, Carla S	NI	4	Instructor	144090
Gregory, Leland H	NI	4	Instructor	168130
Barnas, Frank A	N9	5	Lecturer	123500
Durham, James R	N9	5	Lecturer	355070
Han, Dae S	N9	5	Lecturer	104280
Humphries, Andrew B	N9	5	Lecturer	144190
Parsons, Adam E	N9	5	Lecturer	367070
Pierce, Benjamin A	N9	5	Lecturer	120120
White, Ian E	N9	5	Lecturer	115020

Adjustments (Post Retiree, full reassignment, leave of absence, sick leave, etc.) - excluded from Total Faculty count:

Summary			
Tenured (T9):	13	Professor (1):	2
Tenure Track (K9):	6	Associate Professor (2):	13
Full-Time Temporary (N9):	7	Assistant Professor (3):	4
Instructor Track (NI):	2	Master Instructor (7):	0
Coordinator Track (NK):	0	Senior Instructor (6):	0
Clinical/Professional Practice Track (NN):	0	Instructor (4):	2
Research Track (NR):	0	Lecturer (5):	7
Total Faculty:	28		

Faculty Name	Code	Code	Job Title	Number
Recording Industry				
Akins, Joseph L	T9	1	Professor	145220
Collier, Cosette R	T9	1	Professor	145180
Crabtree, William E	T9	1	Professor	145240
Dahan, Charles B	T9	1	Professor	145340
De Clercq, Trevor O	T9	1	Professor	145110
Fleming, Michael S	T9	1	Professor	145290
Foglia, Matthew M	T9	1	Professor	145280
Macy, Amy S	T9	1	Professor	145100
Merchant, John H	T9	1	Professor	145010
Piekarski, James L	T9	1	Professor	145190
Wagnon, Deborah L	T9	1	Professor	145310
Wald, Melissa A	T9	1	Professor	145320
Baird, Frank C	T9	2	Associate Professor	145330
Blackmon, Charles O	T9	2	Associate Professor	145270
Conceison, Michelle	T9	2	Chairperson	145005
Donham, Tammy R	T9	2	Associate Professor	145230
Green, Gloria E	T9	2	Associate Professor	145040
Hanson, Michael L	T9	2	Associate Professor	805020
Simpson, Misty J	T9	2	Associate Professor	145080
Caress, Adam	K9	3	Assistant Professor	145210
Couch, Paul T	K9	3	Assistant Professor	145130
Dremel, Frank W	K9	3	Assistant Professor	145120
Gargel, Mauricio	K9	3	Assistant Professor	145030
Ouellette, John R	K9	3	Assistant Professor	145060
Riley, Holly B	K9	3	Assistant Professor	145020
Rogers, Elizabeth H	K9	3	Assistant Professor	145140
Shackelford, Kathleen D	K9	3	Assistant Professor	145170

Faculty Name	Code	Code	Job Title	Number
Recording Industry (cont.)				
Fletcher, Daudi E	N9	5	Lecturer	101120
Rowland, Daniel C	N9	5	Lecturer	126280
Weiss, Mark A	N9	5	Lecturer	712010

Adjustments (Post Retiree, full reassignment, leave of absence, sick leave, etc.) - excluded from Total Faculty count:

Paulson, Kenneth A			Post Retirement Faculty	09.07
--------------------	--	--	-------------------------	-------

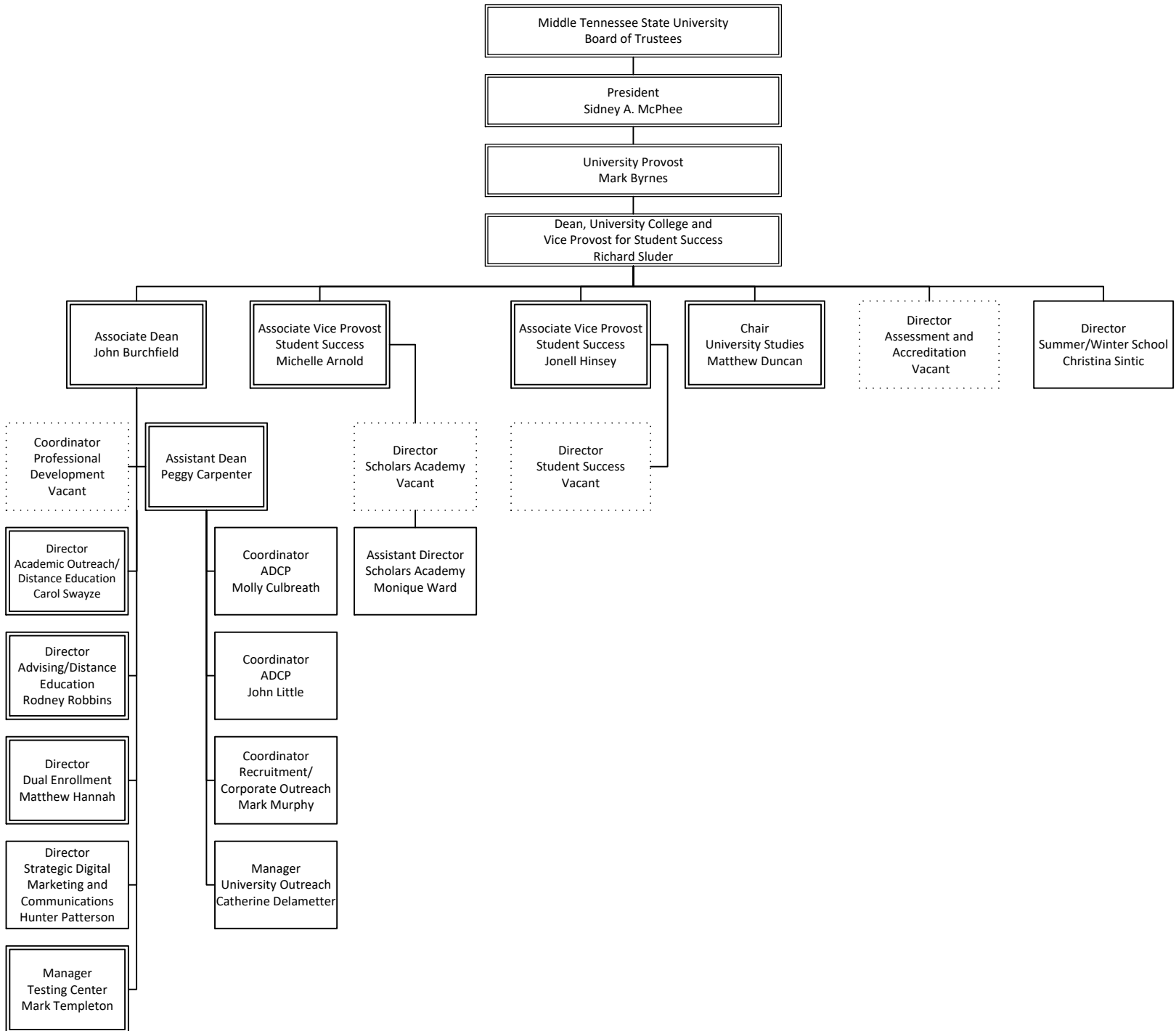
Summary

Tenured (T9):	19	Professor (1):	12
Tenure Track (K9):	8	Associate Professor (2):	7
Full-Time Temporary (N9):	3	Assistant Professor (3):	8
Instructor Track (NI):	0	Master Instructor (7):	0
Coordinator Track (NK):	0	Senior Instructor (6):	0
Clinical/Professional Practice Track (NN):	0	Instructor (4):	0
Research Track (NR):	0	Lecturer (5):	3

Total Faculty: 30

This page intentionally left blank

**MIDDLE TENNESSEE STATE UNIVERSITY
UNIVERSITY COLLEGE AND
OFFICE OF STUDENT SUCCESS
OCTOBER BUDGET 2024-2025**



UNIVERSITY COLLEGE AND OFFICE OF STUDENT SUCCESS

Vice Provost for Student Success and Dean of the University College, Richard Sluder, Professor

Associate Dean, John Burchfield

Associate Vice Provost, Student Success, Michelle Arnold

Associate Vice Provost, Student Success, Jonell Hinsey

Assistant Dean, Peggy Carpenter

Director, Academic Outreach/Distance Education, Carol Swayze

Director, Advising/Distance Education, Rodney Robbins

Director, Assessment and Accreditation, Vacant

Director, Scholars Academy, Vacant

Assistant Director, Scholars Academy, Monique Ward

Director, Strategic Digital Marketing and Communications, Hunter Patterson

Director, Summer/Winter Session, Christina Sintic

Coordinator, ADCP, Molly Culbreath

Coordinator, ADCP, John Little

Coordinator, Dual Enrollment, Matthew Hannah

Coordinator, Professional Development, Vacant

Coordinator, Recruitment/Corporate Outreach, Mark Murphy

Manager, Testing Center, Mark Templeton

Manager, University Outreach, Catherine Delametter

ACADEMIC DEPARTMENTS

Chairperson, University Studies and UNIV 1010 Program Coordinator, Matthew Duncan, Associate Professor

Faculty Name	Code	Code	Job Title	Number
University Studies				
Alley, Vivian R	T9	1	Professor	136090
Boyle, Mike A	T9	1	Professor	136070
Higgs, Meredith A	T9	1	Professor	136200
McDaniel, Scott N	T9	1	Professor	136350
Raines, Joan M	T9	1	Professor	136190
Rust, Dianna Z	T9	1	Professor	136010
Duncan, Matthew D	T9	2	Chairperson	136005
Morris, Pamela D	T9	2	Associate Professor	136130
Nelson, Timothy S	T9	2	Associate Professor	136180
Campos, Brielle R	K9	3	Assistant Professor	136260
Carter, Keri L	K9	3	Assistant Professor	136240
Zolt, Holly M	K9	3	Assistant Professor	136080
Hatfield, Carla G	NI	6	Senior Instructor	115290
Johnson, Gina E	NK	6	Senior Instructor	136360
Abernathy, Michele	NI	4	Instructor	136430
Joseph, Maged W	NI	4	Instructor	136040
McCluney, Pamela C	NI	4	Instructor	114010
Stickle, Amy T	NI	4	Instructor	136390

Faculty Name	Code	Code	Job Title	Number
University Studies (cont)				
Brown, Allison D	N9	5	Lecturer	118720
Elliott, Pamela D	N9	5	Lecturer	136370
Green, Aundria C	N9	5	Lecturer	242060
Haber, Debra L	N9	5	Lecturer	110320
Madaris, Elizabeth H	N9	5	Lecturer	182010
Pheneger, Linda M	N9	5	Lecturer	136160
Popoola, Ifeoluwa A	N9	5	Lecturer	136030
Potratz, Nathan K	N9	5	Lecturer	107520
Puckett, William E	N9	5	Lecturer	103550
Stephens, Bonnie H	N9	5	Lecturer	136380
Teague, Savanna R	N9	5	Lecturer	355050
Watkins, Cody D	N9	5	Lecturer	712100
Wundsam, Marta E	N9	5	Lecturer	136050

Adjustments (Post Retiree, full reassignment, leave of absence, sick leave, etc.) - excluded from Total Faculty count:

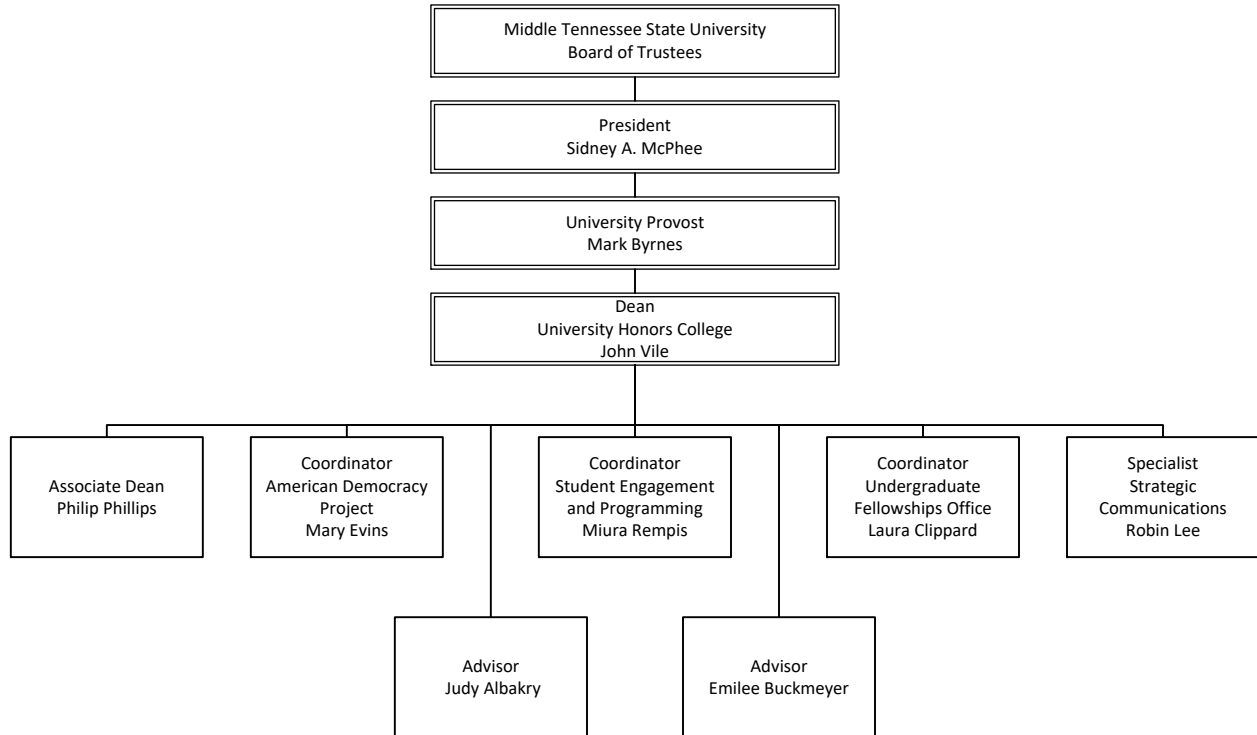
Clark, Linda M	T9	1	Professor	136020
Schmidt, Teresa A	N9	5	Lecturer	136110

Summary

Tenured (T9):	9	Professor (1):	6
Tenure Track (K9):	3	Associate Professor (2):	3
Full-Time Temporary (N9):	13	Assistant Professor (3):	3
Instructor Track (NI):	5	Master Instructor (7):	0
Coordinator Track (NK):	1	Senior Instructor (6):	2
Clinical/Professional Practice Track (NN):	0	Instructor (4):	4
Research Track (NR):	0	Lecturer (5):	13

Total Faculty: 31

**MIDDLE TENNESSEE STATE UNIVERSITY
UNIVERSITY HONORS COLLEGE
OCTOBER BUDGET 2024-2025**



UNIVERSITY HONORS COLLEGE

Dean, John Vile, Professor

Associate Dean, Philip Phillips, Professor

Advisor, Judy Albakry

Advisor, Emilee Buckmeyer

Coordinator, American Democracy Project, Mary Evins

Coordinator, Student Engagement and Programming, Miura Rempis

Coordinator, Undergraduate Fellowships Office, Laura Clippard

Specialist, Strategic Communications, Robin Lee

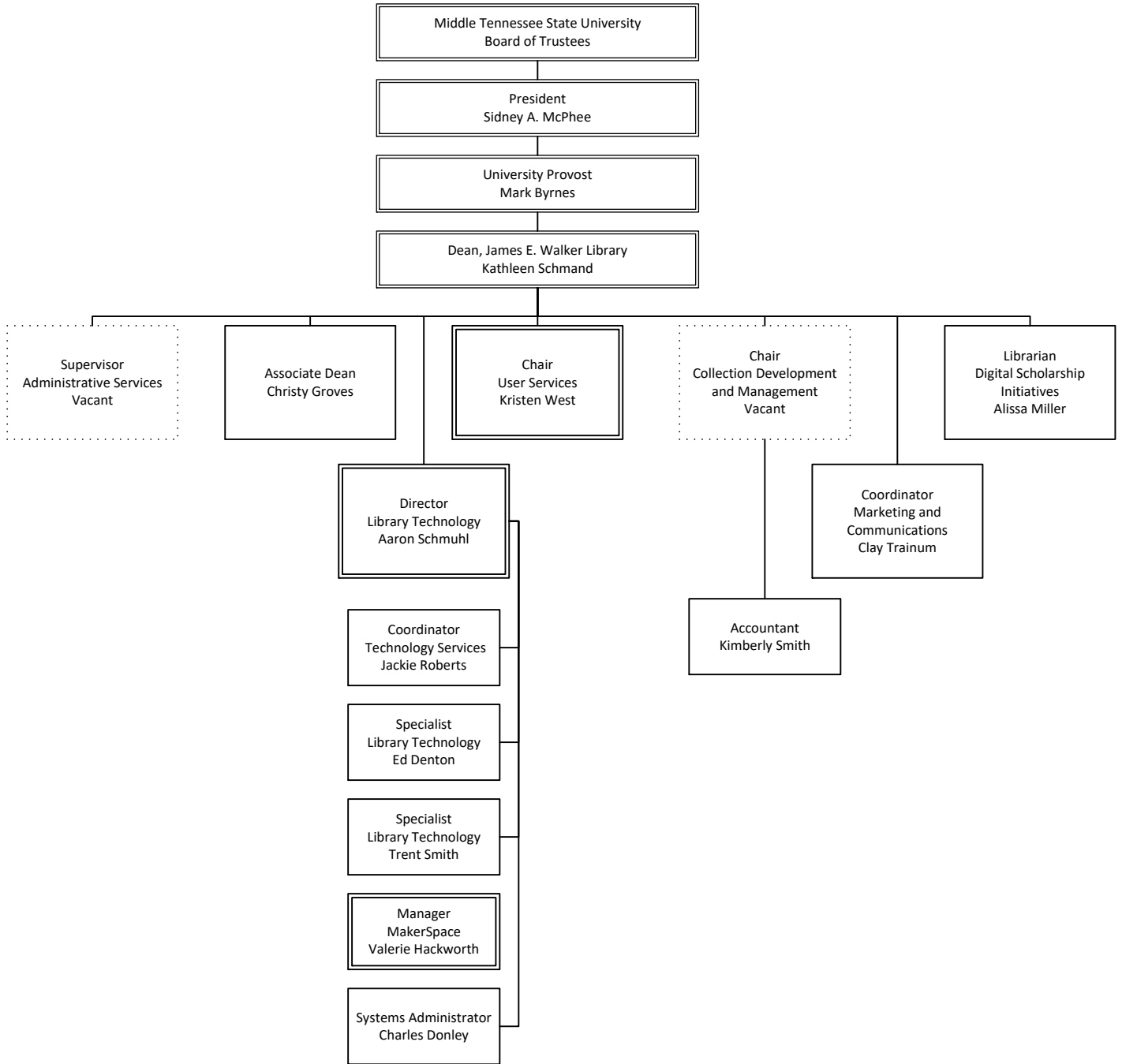
Faculty Name	Code	Code	Job Title	Number
University Honors				
Evins, Mary A	NR	1	Professor - 12 month	004010

Adjustments (Post Retiree, full reassignment, leave of absence, sick leave, etc.) - excluded from Total Faculty count:

Summary			
Tenured (T9):	0	Professor (1):	1
Tenure Track (K9):	0	Associate Professor (2):	0
Full-Time Temporary (N9):	0	Assistant Professor (3):	0
Instructor Track (NI):	0	Master Instructor (7):	0
Coordinator Track (NK):	0	Senior Instructor (6):	0
Clinical/Professional Practice Track (NN):	0	Instructor (4):	0
Research Track (NR):	1	Lecturer (5):	0
Total Faculty:	1		

This page intentionally left blank

**MIDDLE TENNESSEE STATE UNIVERSITY
JAMES E. WALKER LIBRARY
OCTOBER BUDGET 2024-2025**



COLLEGE OF MEDIA AND ENTERTAINMENT

Dean, Beverly Keel, Professor

Associate Dean, Zeny Panol, Professor

Assistant Dean, Jennifer Woodard, Professor

Assistant to the Dean, Dana Potter

Director, Baldwin Photographic Gallery, Shannon Randol, Associate Professor

Director, Center for Innovation in Media, Valerie Hoepfner

Director, Center for Popular Music, Gregory Reish, Professor

Director, Development, Kristin Wells-Morrison

Director, John Seigenthaler Chair of Excellence in First Amendment Studies, Deborah Fisher

Director, Media Arts Technical Support, Michael Forbes

Director, Office of Communication Research and Middle Tennessee Poll, Kenneth Blake, Professor

Director, Recording Industry Facilities, Clarke Schleicher

Director, Recording Industry and Technologies MFA Program, William Crabtree

Engineer, Recording Industry, Alton Dellinger

Local Service Provider, Jefferson Roberts

Manager, Advising, Janell Fisher

Specialist, Recording Industry IT, Christopher Dilday

ACADEMIC DEPARTMENTS

Director, School of Journalism and Strategic Media, Katherine Foss, Professor

Chairperson, Media Arts, Interim, Robert Gordon, Associate Professor

Chairperson, Recording Industry, Michelle Conceison, Associate Professor

Faculty Name	Code	Code	Job Title	Number
Collection Development and Management				
Geckle, Beverly J	T9	1	Professor - 12 month	401110
Kirk, Rachel A	T9	1	Professor - 12 month	401560
Hays Mangrum, Valerie S	T9	2	Associate Professor - 12 month	401090
Martin, Susan J	T9	2	Associate Professor - 12 month	401060
Quintel, Denise F	T9	2	Associate Professor - 12 month	641030
Scott, Amanda L	T9	2	Associate Professor - 12 month	401130
Turney, Linda M	T9	2	Associate Professor - 12 month	401160
Williams, Jo A	T9	2	Associate Professor - 12 month	401120
Oldham, Clay P	K9	3	Assistant Professor - 12 month	401070

Adjustments (Post Retiree, full reassignment, leave of absence, sick leave, etc.) - excluded from Total Faculty count:

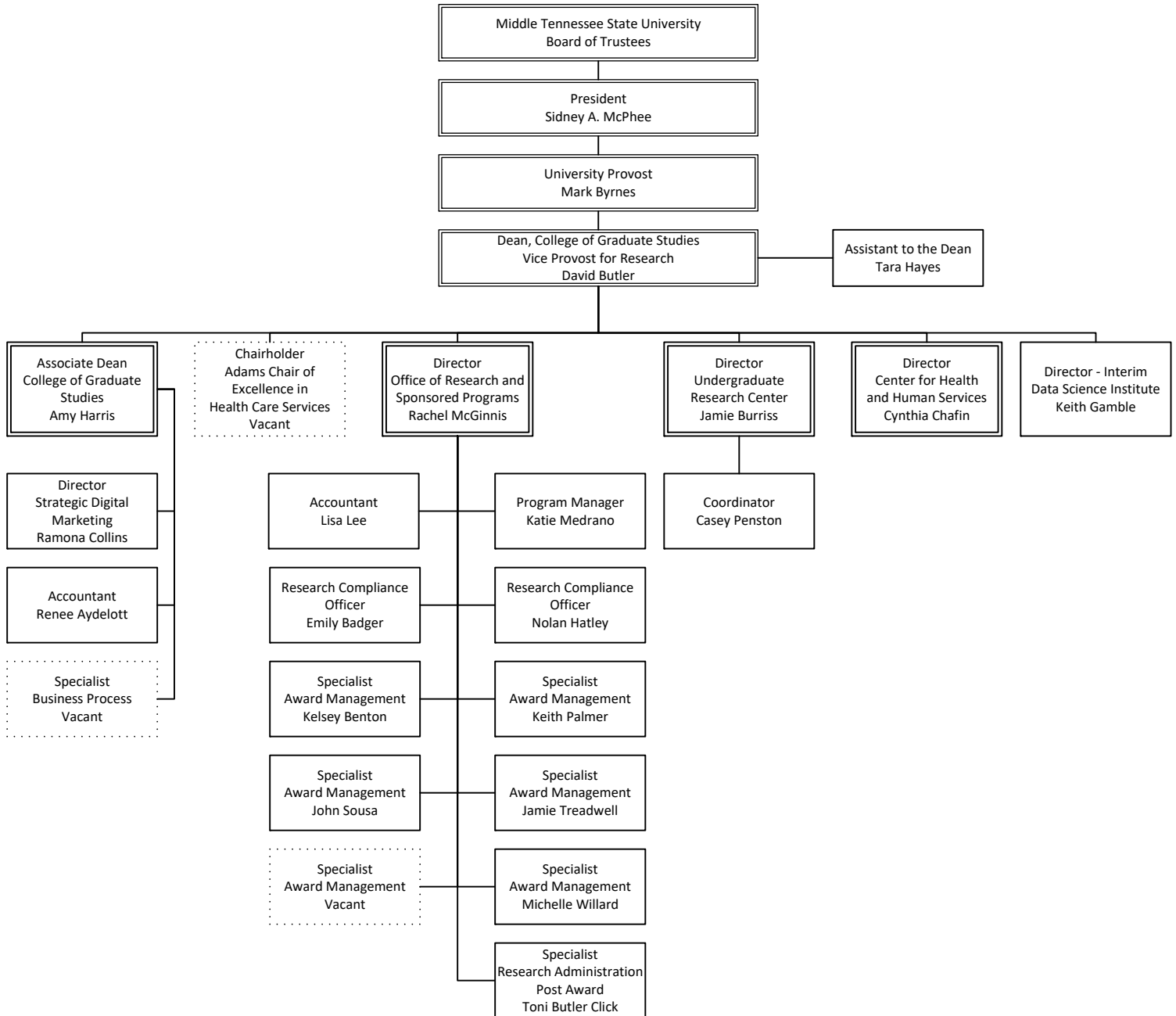
Summary			
Tenured (T9):	8	Professor (1):	2
Tenure Track (K9):	1	Associate Professor (2):	6
Full-Time Temporary (N9):	0	Assistant Professor (3):	1
Instructor Track (NI):	0	Master Instructor (7):	0
Coordinator Track (NK):	0	Senior Instructor (6):	0
Clinical/Professional Practice Track (NN):	0	Instructor (4):	0
Research Track (NR):	0	Lecturer (5):	0
Total Faculty:	9		

Faculty Name	Code	Code	Job Title	Number
User Services				
Middleton, Kenneth	T9	1	Professor - 12 month	401430
Miller, Alissa L	T9	1	Professor - 12 Month	401180
Nourse, Karen V	T9	1	Professor - 12 month	402090
Sloane, Mary E	T9	1	Professor - 12 month	401100
Vance, Jason M	T9	1	Professor - 12 month	641020
Baker, Grover C	T9	2	Associate Professor - 12 month	131400
Dearing, Karen R	T9	2	Associate Professor - 12 month	401510
Nielsen, Jordan M	T9	2	Associate Professor - 12 Month	401080
Shealy, Ashley D	T9	2	Associate Professor - 12 month	401170
West, Kristen	T9	2	Chairperson - 12 month	641005
York, Amy C	T9	2	Associate Professor - 12 month	401410
Baskin, Ginelle D	K9	3	Assistant Professor - 12 month	401050
Dowdy, Jacqueline D	T9	3	Assistant Professor - 12 month	401460
Parente, Sharon C	T9	3	Assistant Professor - 12 month	401140

Adjustments (Post Retiree, full reassignment, leave of absence, sick leave, etc.) - excluded from Total Faculty count:

Summary			
Tenured (T9):	13	Professor (1):	5
Tenure Track (K9):	1	Associate Professor (2):	6
Full-Time Temporary (N9):	0	Assistant Professor (3):	3
Instructor Track (NI):	0	Master Instructor (7):	0
Coordinator Track (NK):	0	Senior Instructor (6):	0
Clinical/Professional Practice Track (NN):	0	Instructor (4):	0
Research Track (NR):	0	Lecturer (5):	0
Total Faculty:	14		

**MIDDLE TENNESSEE STATE UNIVERSITY
COLLEGE OF GRADUATE STUDIES AND
OFFICE OF RESEARCH AND SPONSORED PROGRAMS
OCTOBER BUDGET 2024-2025**



COLLEGE OF GRADUATE STUDIES AND OFFICE OF RESEARCH AND SPONSORED PROGRAMS

Vice Provost for Research and Dean of the College of Graduate Studies, David Butler, Professor

Associate Dean, Amy Harris, Professor

Director, Center for Health and Human Services, Cynthia Chafin

Director - Interim, Data Science Institute, Keith Gamble

Director, Office of Research Services and Sponsored Programs, Rachel McGinnis

Director, Strategic Digital Marketing, Ramona Collins

Director, Undergraduate Research Center, Jamie Burriss

Chairholder, Adams Chair of Excellence in Health Care Services, Vacant

Accountant, College of Graduate Studies, Renee Aydelott

Accountant, Office of Research and Sponsored Programs, Lisa Lee

Coordinator, Undergraduate Research Center, Casey Penston

Program Manager, Office of Research and Sponsored Programs, Katie Medrano

Research Compliance Officer, Office of Research and Sponsored Programs, Nolan Hatley

Research Compliance Officer, Office of Research and Sponsored Programs, Emily Badger

Specialist, Award Management, Office of Research and Sponsored Programs, Kelsey Benton

Specialist, Award Management, Office of Research and Sponsored Programs, Keith Palmer

Specialist, Award Management, Office of Research and Sponsored Programs, John Sousa

Specialist, Award Management, Office of Research and Sponsored Programs, Jamie Treadwell

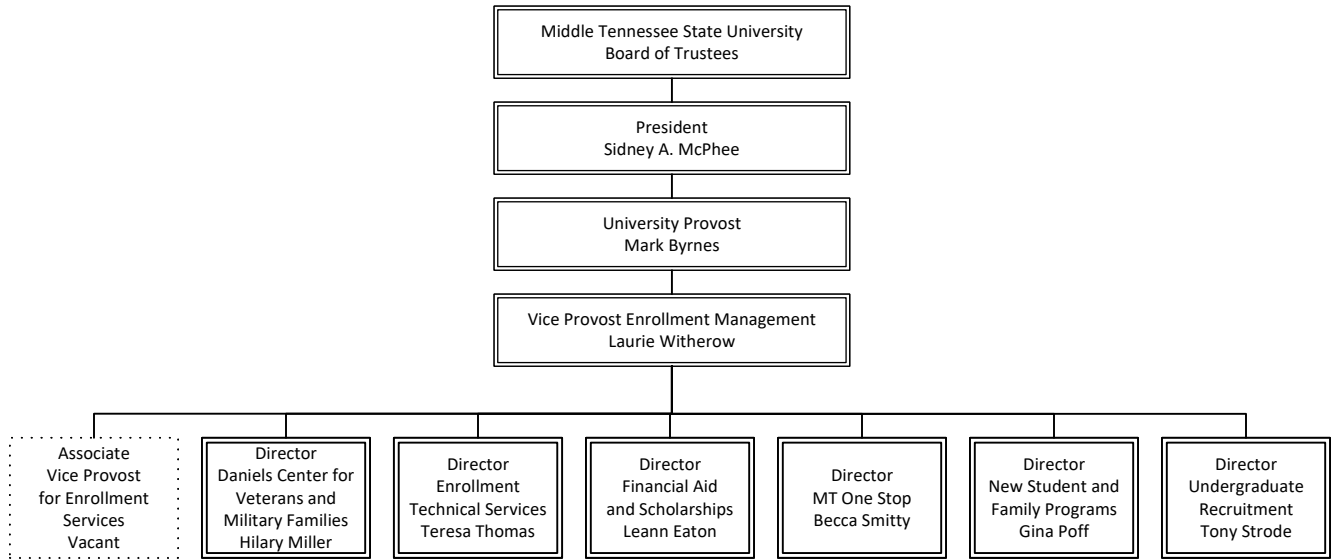
Specialist, Award Management, Office of Research and Sponsored Programs, Michelle Willard

Specialist, Award Management, Office of Research and Sponsored Programs, Vacant

Specialist, Business Process, College of Graduate Studies, Vacant

Specialist Research Administration, Post-Award, Office of Research and Sponsored Programs, Toni Butler Click

**MIDDLE TENNESSEE STATE UNIVERSITY
ENROLLMENT SERVICES
OCTOBER BUDGET 2024-2025**



ENROLLMENT SERVICES

Vice Provost, Enrollment Management, Laurie Witherow

Associate Vice Provost, Enrollment Services, Vacant

Director, Daniels Center for Veterans and Military Families, Hilary Miller

Director, Enrollment Technical Services, Teresa Thomas

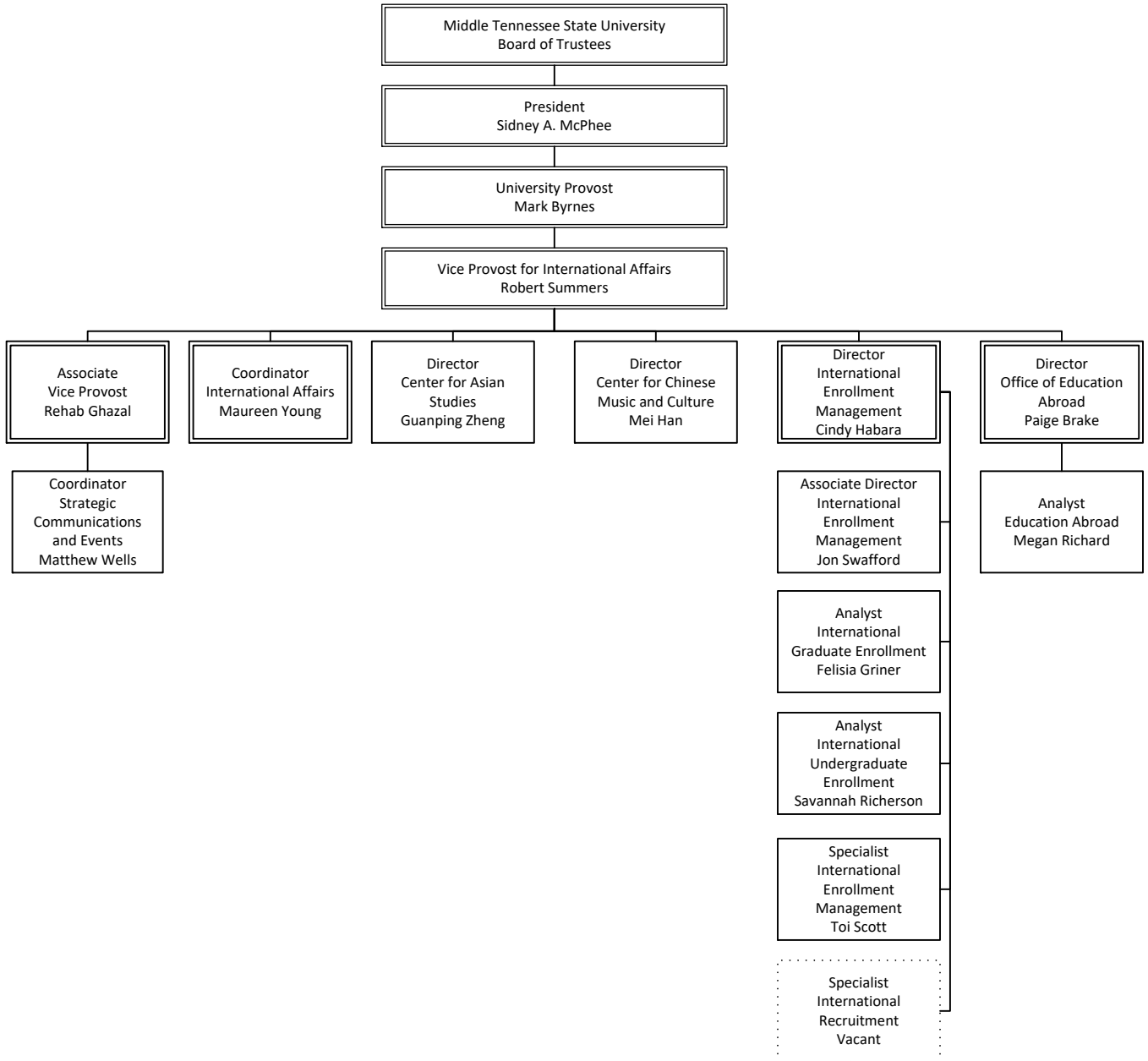
Director, Financial Aid, Leann Eaton

Director, MT One Stop, Becca Smitty

Director, New Student and Family Programs, Gina Poff

Director, Undergraduate Admissions, Tony Strode

**MIDDLE TENNESSEE STATE UNIVERSITY
OFFICE OF INTERNATIONAL AFFAIRS
OCTOBER BUDGET 2024-2025**



OFFICE OF INTERNATIONAL AFFAIRS

Vice Provost, Robert Summers, Professor

Associate Vice Provost, Rehab Ghazal

Director, Center for Asian Studies, Guanping Zheng

Director, Center for Chinese Music and Culture, Mei Han, Professor

Director, International Enrollment Management, Cindy Habara

Director, Office of Education Abroad, Paige Brake

Associate Director, International Enrollment Management, Jon Swafford

Analyst, Education Abroad, Megan Richard

Analyst, International Graduate Enrollment, Felisia Griner

Analyst, International Undergraduate Enrollment, Savannah Richerson

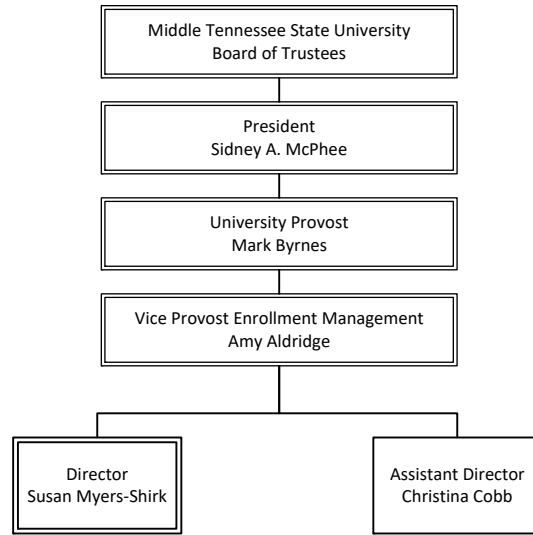
Coordinator, International Affairs, Maureen Young

Coordinator, Strategic Communication and Events, Matthew Wells

Specialist, International Enrollment Management, Toi Scott

Specialist, International Recruitment, Vacant

**MIDDLE TENNESSEE STATE UNIVERSITY
TRUE BLUE CORE
OCTOBER BUDGET 2024-2025**



TRUE BLUE CORE

Director, Susan Myers-Shirk, Professor

Assistant Director, Christina Cobb, Associate Professor

Faculty Name	Code	Code	Job Title	Number
True Blue Core				
Myers-Shirk, Susan E	T9	1	Professor	126100
Cobb, Christina M	T9	2	Associate Professor	115090

Adjustments (Post Retiree, full reassignment, leave of absence, sick leave, etc.) - excluded from Total Faculty count:

Myers-Shirk, Susan E	T9	1	Professor	126100
Cobb, Christina M	T9	2	Associate Professor	115090

Summary

Tenured (T9):	0	Professor (1):	0
Tenure Track (K9):	0	Associate Professor (2):	0
Full-Time Temporary (N9):	0	Assistant Professor (3):	0
Instructor Track (NI):	0	Master Instructor (7):	0
Coordinator Track (NK):	0	Senior Instructor (6):	0
Clinical/Professional Practice Track (NN):	0	Instructor (4):	0
Research Track (NR):	0	Lecturer (5):	0
Total Faculty:	0		